

CITY OF ELLIS, KANSAS

NW Corner of 21st St
Sec. 5, T13S, R20W

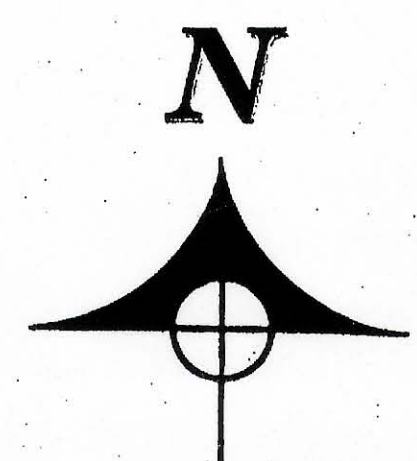
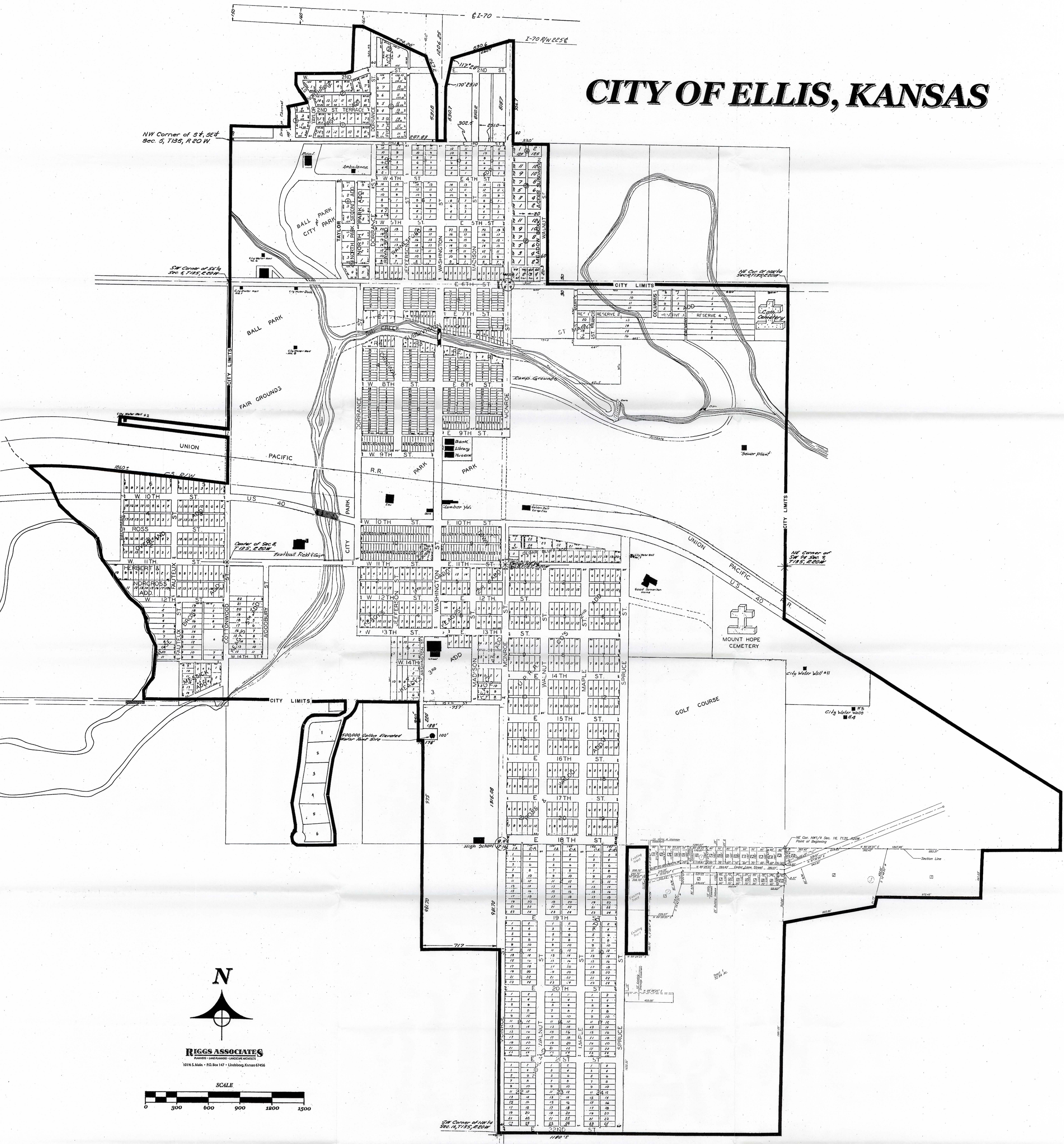
SW Corner of 25th St
Sec. 9, T13S, R20W

NE Corner of 10th St
Sec. 16, T13S, R20W

NE Corner of
SW 1/4 Sec. 9
T13S, R20W

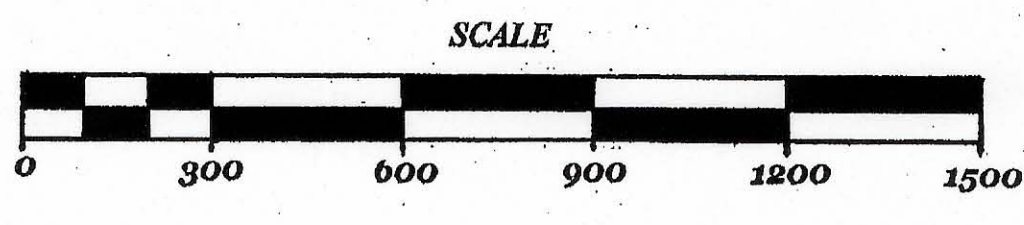
NE Corner of NW 1/4
Sec. 16, T13S, R20W
Point of Beginning

SW Corner of NW 1/4
Sec. 14, T13S, R20W



RIGGS ASSOCIATES
PLANNERS - LANDSCAPE ARCHITECTS

10115 S. Main • P.O. Box 147 • Lindbergh, Kansas 67456



split road 2114

EXP. 1/1/14