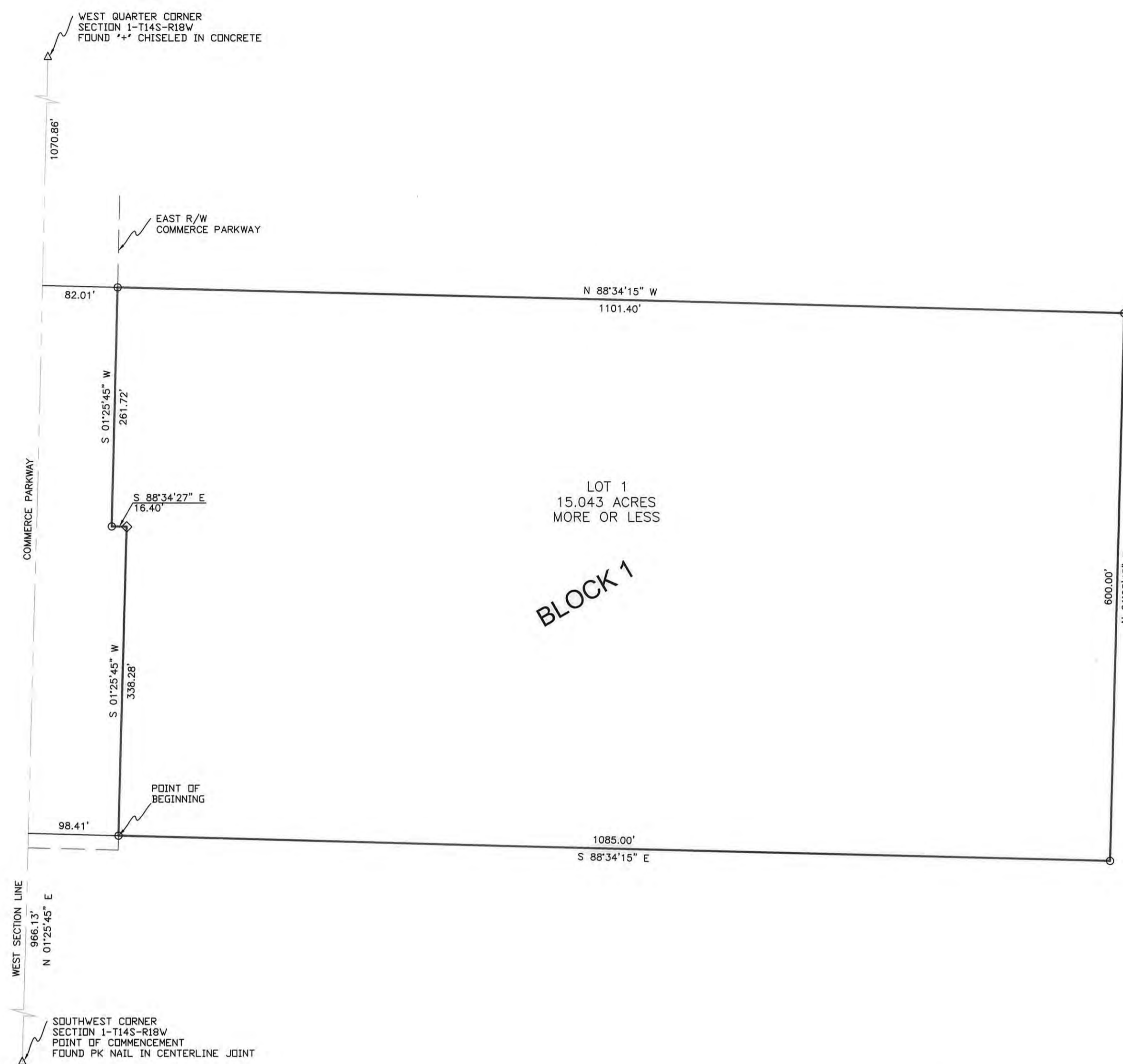


PLAT OF
ARMY RESERVE ADDITION
 TO THE CITY OF HAYS, KANSAS



LEGAL DESCRIPTION:

A tract of land located in the Southwest Quarter (SW/4) of Section One (1), Township Fourteen (14) South, Range Eighteen (18) West of the Sixth Principal Meridian, Ellis County, Kansas. More particularly described as follows:

Commencing at the Southwest Corner of said SW/4; Thence North along the West line of said SW/4 and on an assumed bearing of N 01°25'45" E a distance of 966.13 feet; Thence on a bearing of S 88°34'15" E a distance of 98.41 feet to a point on the East Right of Way of Commerce Parkway and the POINT OF BEGINNING; Thence continuing on the last described course a distance of 1085.00 feet; Thence N 01°25'45" E a distance of 600.00 feet; Thence N 88°34'15" W a distance of 1101.40 feet to a point on the East Right of Way of Commerce Parkway; Thence S 01°25'45" W along the East Right of Way of Commerce Parkway a distance of 261.72 feet; Thence S 88°34'27" E along the East Right of Way of Commerce Parkway a distance of 16.40 feet; Thence S 01°25'45" W along the East Right of Way of Commerce Parkway a distance of 338.28 feet to the POINT OF BEGINNING. Said tract contains 15.043 acres more or less and is subject to any easements or right of ways of record.

STREETS & EASEMENTS:

Streets and alleys as shown on this plat and not heretofore dedicated to and for public use are hereby dedicated.

Easements are hereby dedicated for public use, as utility easement right-of-way, which are shown as lying between the dashed lines in widths indicated and as set forth on this plat, and said easements may be employed for the purpose of installing, repairing and maintaining gas lines, electric lines, telephone lines, and all other forms and types of public utilities, now or hereafter used, by the public over, under and along the strips marked "Utility Easement".

OWNERS CERTIFICATE:

Know all men by these presents, that the undersigned property owner of the land above described, has caused the same to be surveyed and platted into lots, the same to be known as ARMY RESERVE ADDITION to the City of Hays, Kansas.

City of Hays, Kansas:

Sunell Koerner
 Sunell Koerner, Mayor

NOTARY CERTIFICATE:

State of Kansas, County of Ellis, ss:

Be it remembered that on this 14th day of April, 2004, before me, a notary public in and for the County of Ellis and the State of Kansas, came Sunell Koerner, Mayor of the City of Hays, to the foregoing instrument of writing and duly acknowledge the execution of same. In testimony whereof, I have hereunto set my hand and affixed my notarial seal the day and year above written.

Notary Public Karen Randa
 My Commission Expires: 5-28-2005



APPROVALS:

This plat has been submitted to and approved by the Hays, Ellis County Planning Commission this 19th day of April, 2004.

Dave Beiler Secretary
Larry Hedd Chairman

The dedications shown on this plat are accepted by the City Commission of the City of Hays, Kansas this 22nd day of April, 2004.

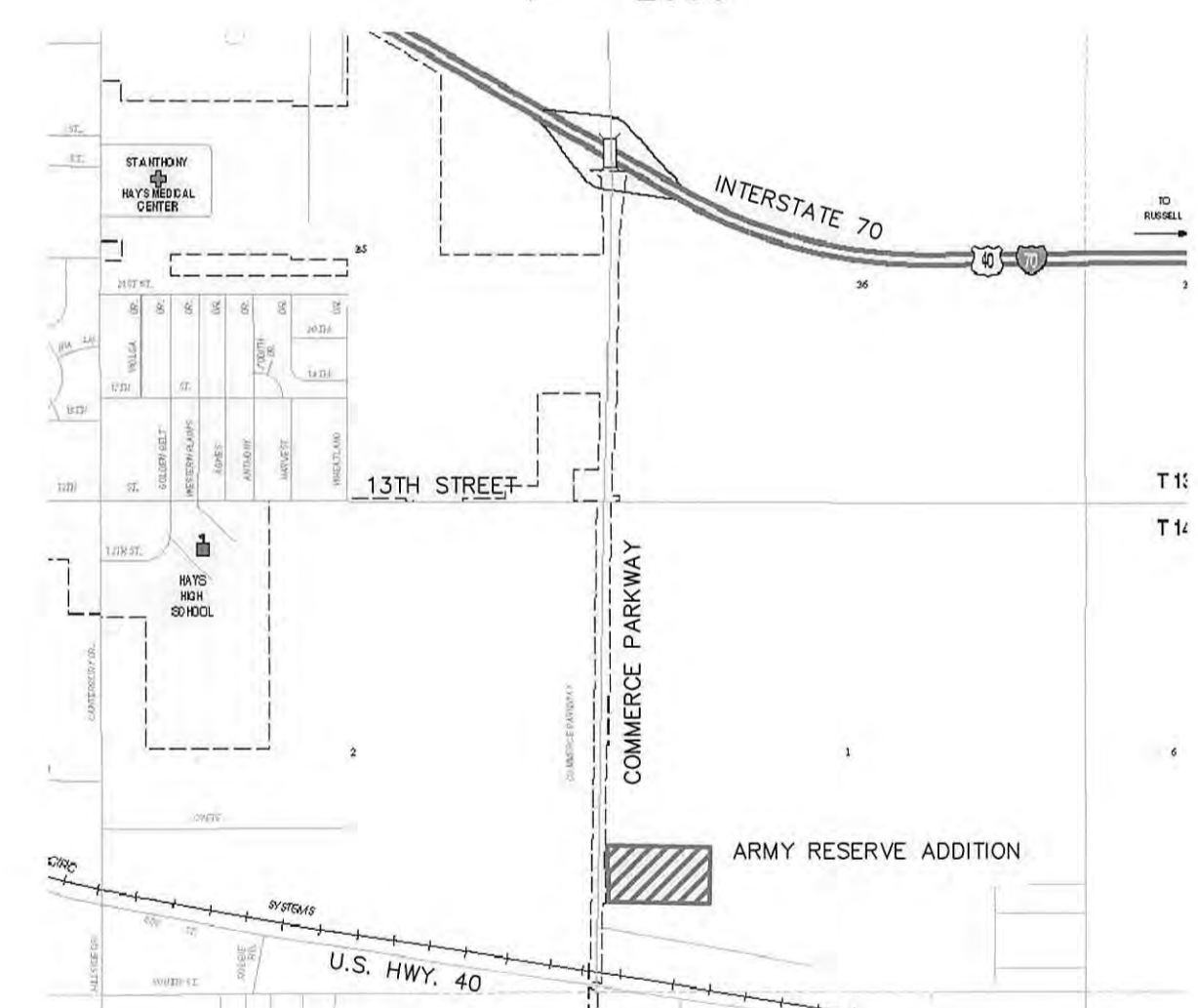


Carolee Boyer City Clerk
Sunell Koerner Mayor

This plat is hereby approved by me this 22nd day of April, 2004.

John T. Bird
 John T. Bird, Attorney for the City of Hays

LOCATION MAP:
 1" = 2000'



TRANSFER RECORD:

Entered on transfer record this 30th day of April, 2004.

Alberte Klaus
 County Clerk



RECORDED:

State of Kansas, County of Ellis, ss

This is to certify that this instrument was filed for record in the Register of Deeds office this 30th day of April, 2004 in Book Calb Page 403.

Rebecca Hargis Register of Deeds
Mary Ann King Deputy



LEGEND:

- o = Set 5/8" rebar w/cap stamped "CSM LS 1367"
- ◇ = Found fence post

REVIEW SURVEYOR'S CERTIFICATE:

State of Kansas, County of Ellis, ss:

I hereby certify that the review of this plat was found to be in compliance with the requirements of K.S.A. 58-2005. Approved this 12th day of April, 2004.



Douglas L. Carlson
 Kansas Reg. No. 715

SURVEYOR'S CERTIFICATE:

State of Kansas, County of Ellis, ss:

I, Darrell E. Christen, a Registered Land Surveyor in the State of Kansas, do hereby certify this plat to be true and correct to the best of my knowledge.



Darrell E. Christen
 Kansas Reg. No. 1367

Resol. # 466: Bk: 591 Pg: 590
 Plat + Dedication: Bk: 591 Pg: 592

City of Hays PO BOX 490 1507 Main Street Hays, KS 67601 (785) 628-7300	CSM Carlson's Surveying & Mapping, Inc. 1504A VINE STREET, Hays, KS 67601 (785) 628-3219 --- www.csmgls.com	JOB NO: 10496	DATE: 03/01/04
		SCALE: 1" = 100'	SHEET: 1 OF 1
SURVEYED BY: DEC			
DRAWN BY: KMT			
APPROVED BY: DEC			
REV	DESCRIPTION	DATE	BY