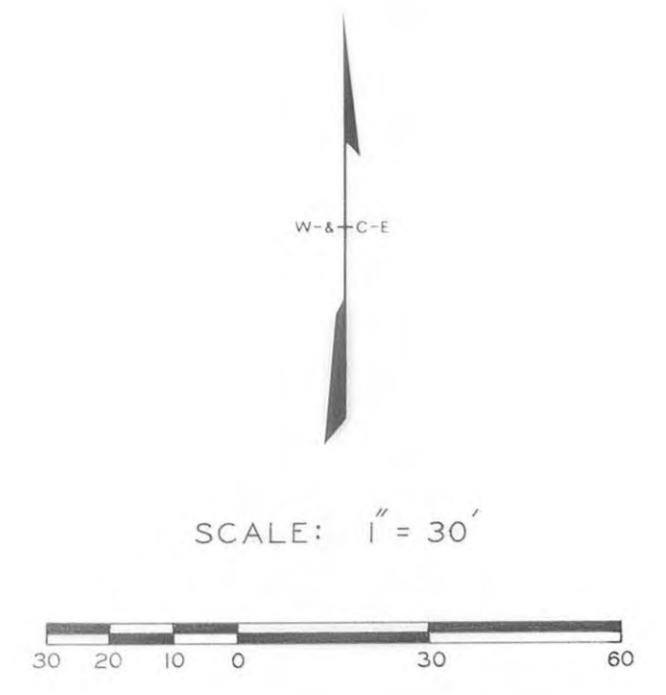
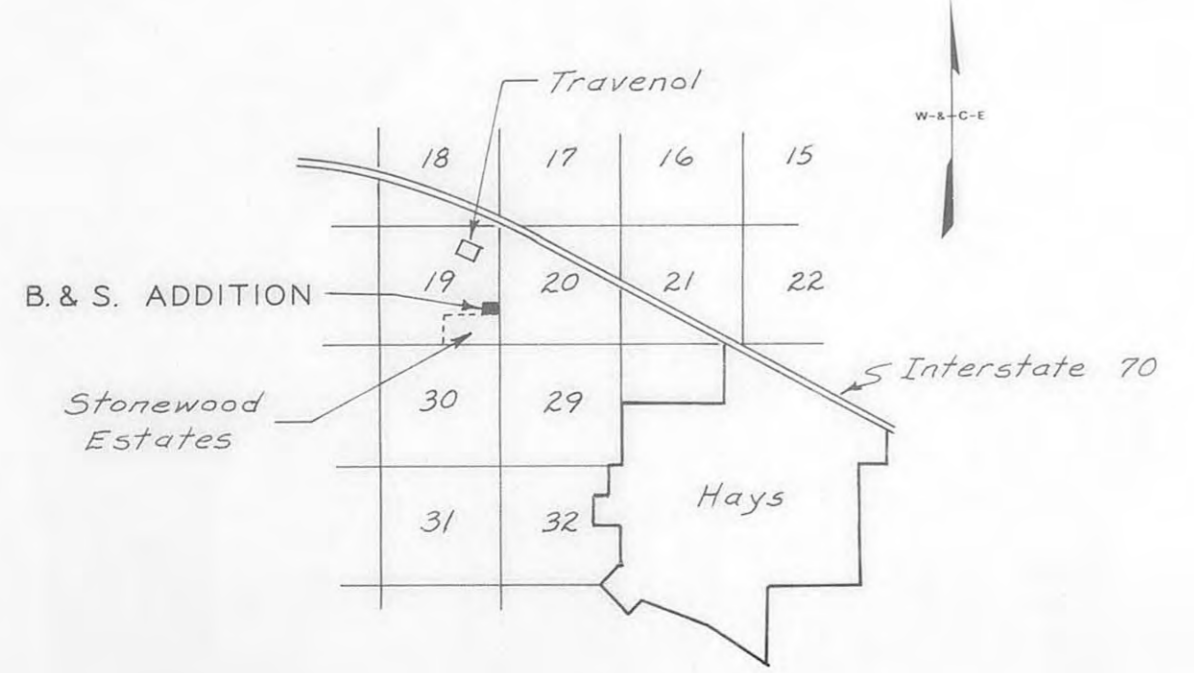
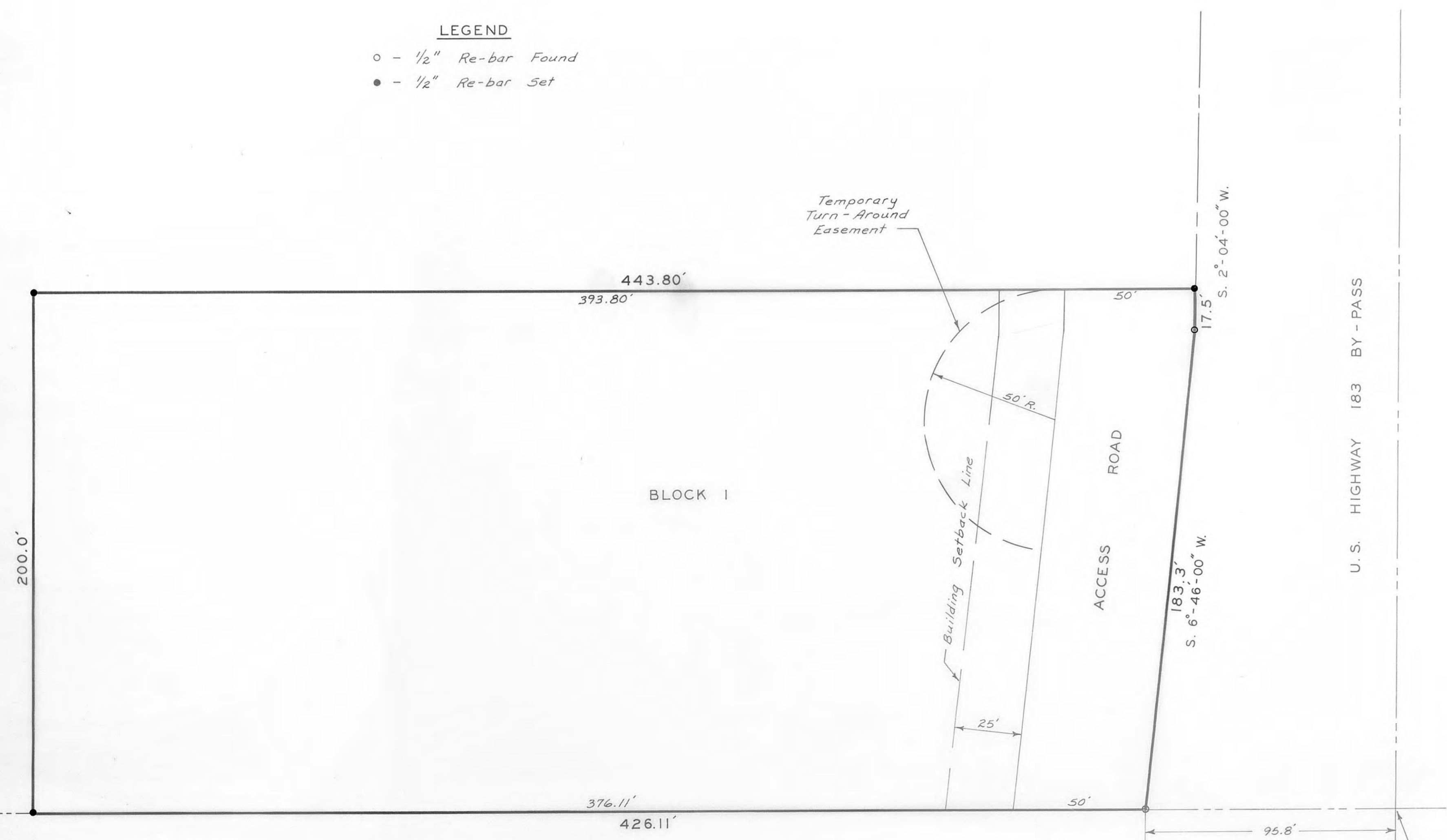


# B. AND S. ADDITION

ELLIS COUNTY, KANSAS



- LEGEND**
- - 1/2" Re-bar Found
  - - 1/2" Re-bar Set



**LOCATION MAP**  
Not To Scale

**LEGAL DESCRIPTION:**  
Tract of land in the North half of the Southeast quarter of Section 19, Township 13 South, Range 18 West, of the Fifth Principal Meridian, Ellis County, Kansas described as follows:

Beginning at the point where the west right-of-way of U.S. Highway 183 By-Pass intersects the south line of the North half of the Southeast quarter (95.8 feet west of the section line); thence, westerly along said south line, a distance of 426.11 feet; thence, northerly parallel to the east line of said Section 19, a distance of 200.00 feet; thence, easterly parallel to the south line, a distance of 443.80 feet to the west right-of-way line of U.S. Highway 183 By-Pass; thence, southerly along said right-of-way line to the point of beginning, said right-of-way line being a line on a bearing of South 2 degrees, 04 minutes, 00 seconds, West a distance of 17.5 feet; thence, on a bearing of South 6 degrees, 46 minutes, 00 seconds, West a distance of 183.3 feet.

**STREETS, ALLEYS, AND EASEMENTS:**  
Streets, alleys, and easements shown on this plat and not heretofore dedicated for public and private use are hereby dedicated for public and private use and may be employed for the purpose of installing, repairing, and maintaining all public and private utilities now or hereafter.

**OWNER'S CERTIFICATE:**  
State of Kansas, County of Ellis, ss  
This is to certify that the undersigned are the owners of the land described in the plat, and that they have caused the same to be surveyed and subdivided as indicated thereon, for the uses and purposes therein set forth, and do hereby acknowledge and adopt the same under the style and title thereon indicated.

All street right-of-way as shown on this plat are hereby dedicated to the public. An easement or license to the public to locate, construct and maintain or authorize the location, construction and maintenance of poles, wires, conduits, water, gas, and sewer pipes or required drainage channels or structures upon the area marked for easements on this plat is hereby granted.

Given under our hands at Hays, Kansas this 27 day of December, 1982.  
*Charles Bull* Charles Bull  
*Marlene Bull* Marlene Bull

**NOTARY CERTIFICATE:**  
State of Kansas, County of Ellis, ss  
I, a Notary Public in and for Ellis County, in the State of Kansas, do hereby certify that Charles Bull, and Marlene Bull, personally known to me to be the same persons whose names are subscribed to the foregoing instrument as such owners, appeared before me this day in person and acknowledged that they signed the plat at their own free and voluntary act for the use and purposes herein set forth.

Given under my hand and Notarial Seal this 27 day of December, 1982.  
 My commission expires 10/4/86  
  
*Tanya A. Schumacher*

**ENGINEER'S CERTIFICATE:**  
I, a licensed professional engineer in the State of Kansas, do hereby certify this plat to be true and correct to the best of my knowledge.  
*Harold H. Moyer, II, P.E.*

**APPROVALS:**  
This plat of B & S Addition has been submitted to and approved by the Planning Commission this 19th day of November, 1982.  
*P. John Jennings* Secretary  
*Robert Nichols* Chairman

The dedications shown on this plat accepted by the City Commission of the City of Hays, Kansas, this 9th day of December, 1982.  
*Serge Phly* Mayor  
 ATTEST: *Ronald S. ...* City Clerk

The dedications shown on this plat are accepted by the County Commission of Ellis County, Kansas, this 13th day of December, 1982.  
*Blair E. Durbach*  
*Harold S. ...*  
 ATTEST: *Emerj ...* County Clerk

The above and foregoing plat is hereby approved by the County Attorney of Ellis County, Kansas this 27th day of DECEMBER, 1982.  
*John ...* County Attorney

State of Kansas, County of Ellis, ss  
This is to certify that this instrument was filed for record in the Register of Deeds Office on the 27 day of Dec, 1982, in Book 301, Page 301.

*Virginia Herzog* Register of Deeds  
*Rae Ann Rupp* Deputy  
  
*Plat & Map Book 301 p. 30*

B & S ADDITION			
ELLIS COUNTY, KANSAS			
DESIGN	DRAWN	DATE:	OCTOBER 1982
	VRR	FILE:	82601
		WILSON & COMPANY	SHEET:
		ENGINEERS & ARCHITECTS	