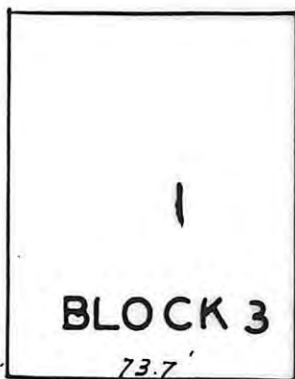
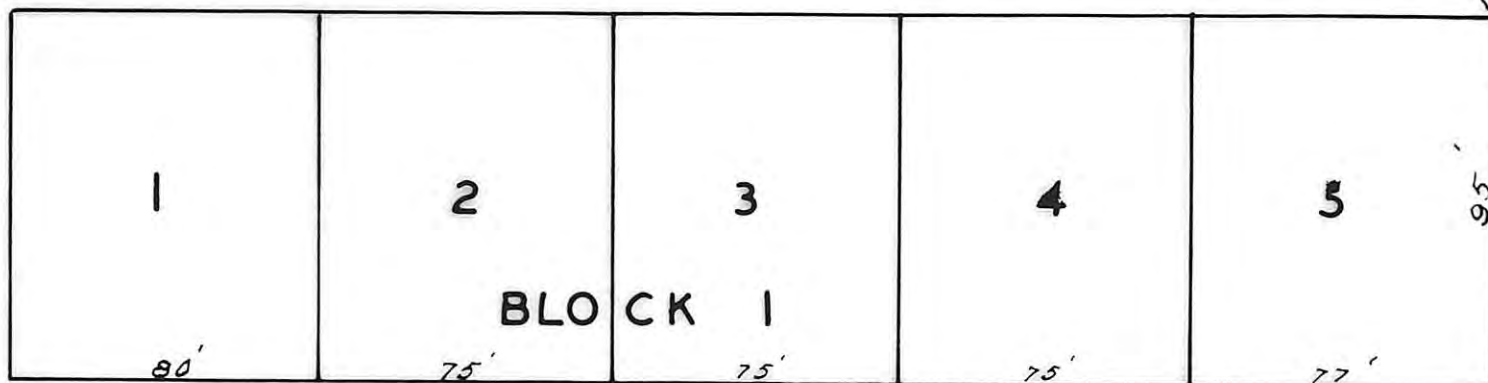




BLOCK 2 BRAUNS FIRST ADDITION

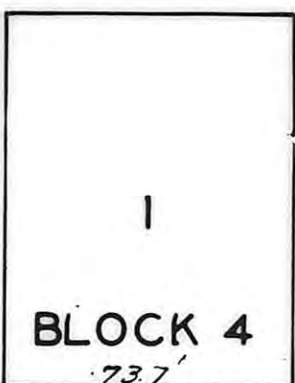


ST.

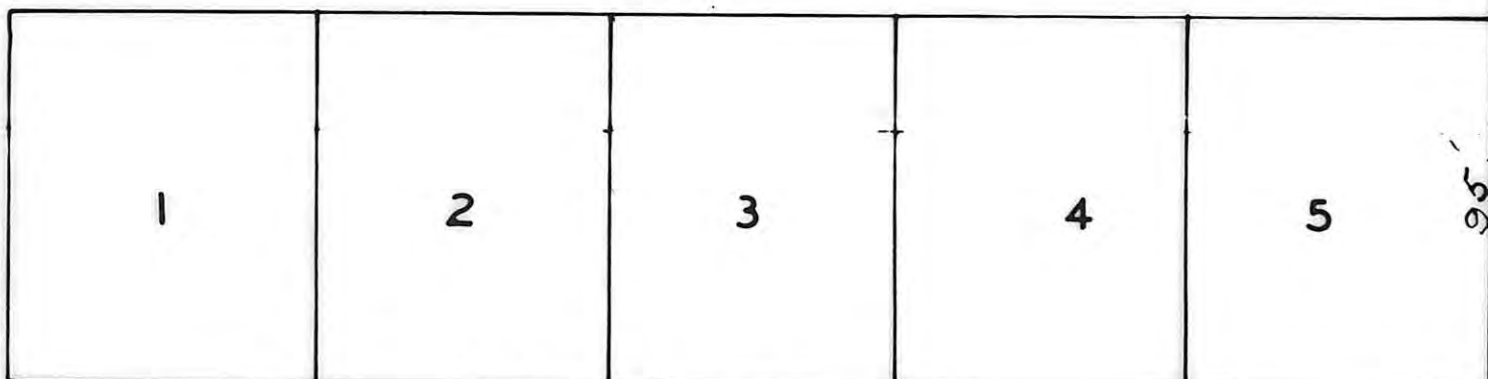


JEFFERSON

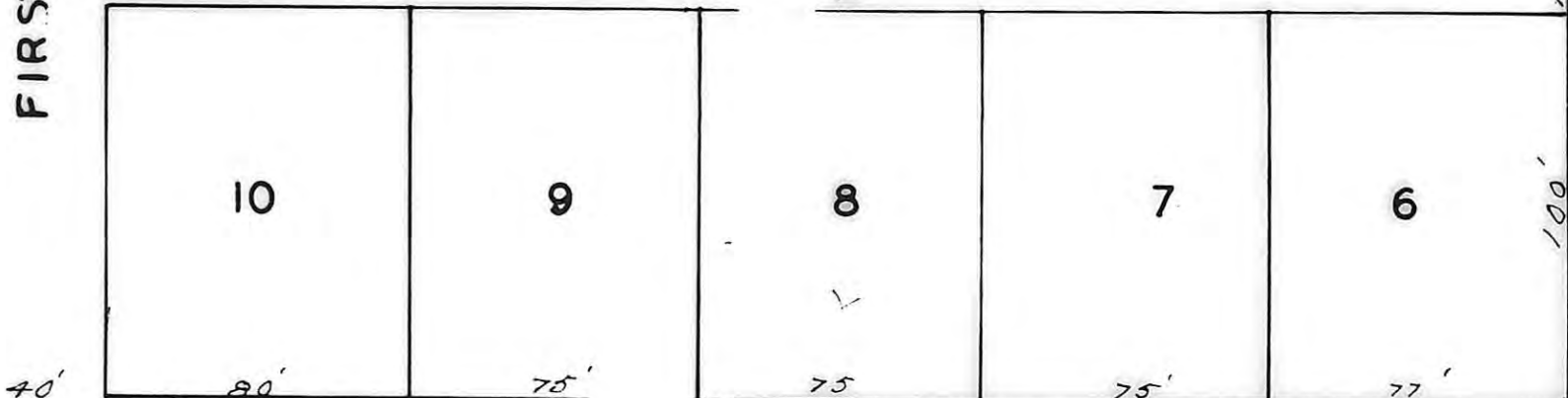
ST.



FIRST



BLOCK 2



KENTUCKY

ST.

REPLAT OF BRAUN'S SECOND ADD.  
TO  
VICTORIA KANSAS

STATE OF KANSAS  
ELLIS COUNTY  
This instrument was filed for record

NOV 7 1955

9:30 o'clock A.M. recorded in  
2 of Plat page 19  
Fees 3.00 Register of Deeds

*For Reference See Plat 146 Page 597*

THIS IS A DIRECT PHOTOGRAPHIC REPRODUCTION OF THE OFFICIAL INSTRUMENT (RECORDED PLAT).  
THIS REPRODUCTION WAS MADE BY BUCHER & WILLIS, CONSULTING ENGINEERS, PLANNERS &  
ARCHITECTS IN JUNE 1979