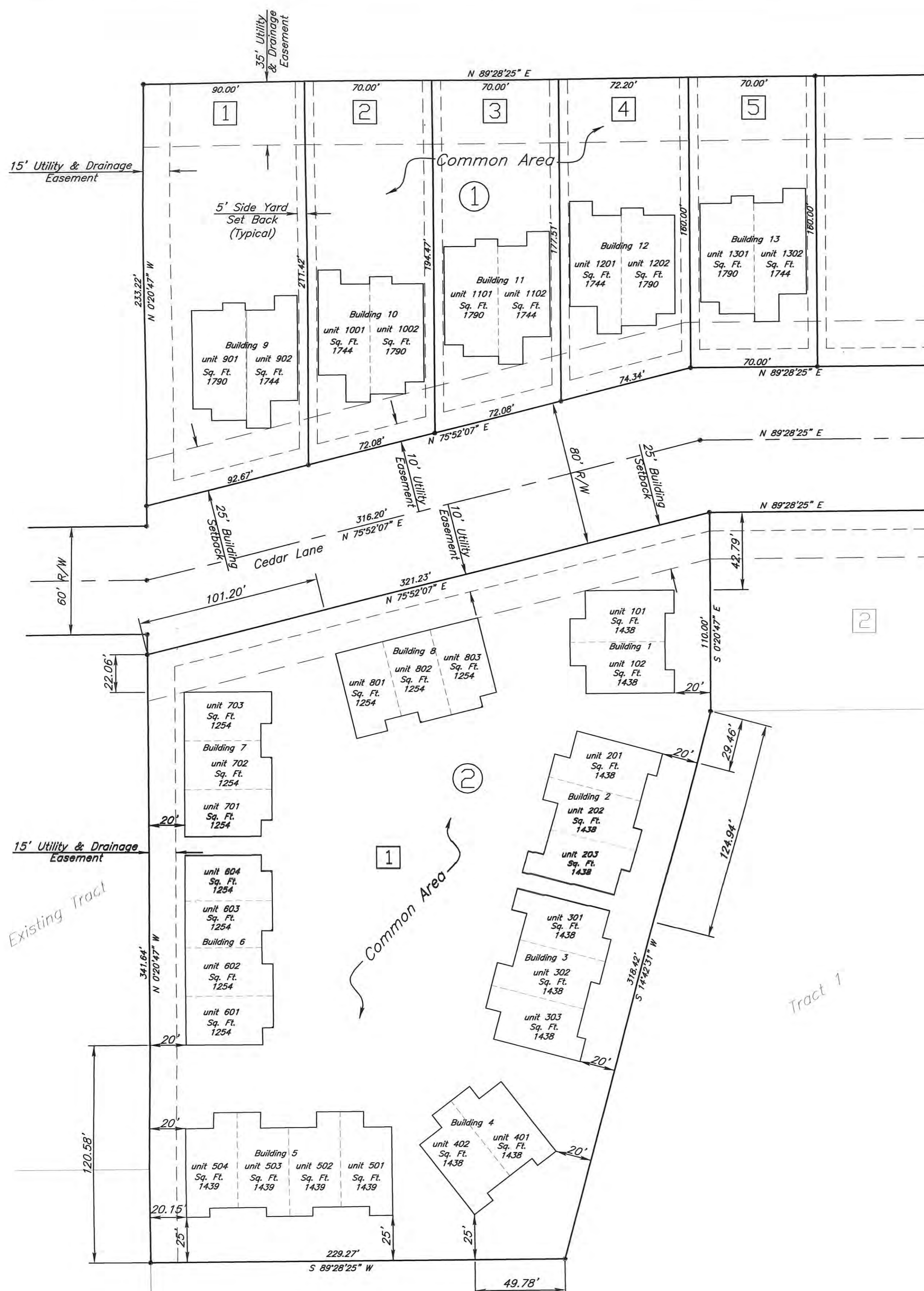


PLAT OF CEDAR RIDGE TOWN HOMES IN Lot 1-5, Block 1, & Lot 1, Block 2, South Ridge First Addition Ellis, Kansas

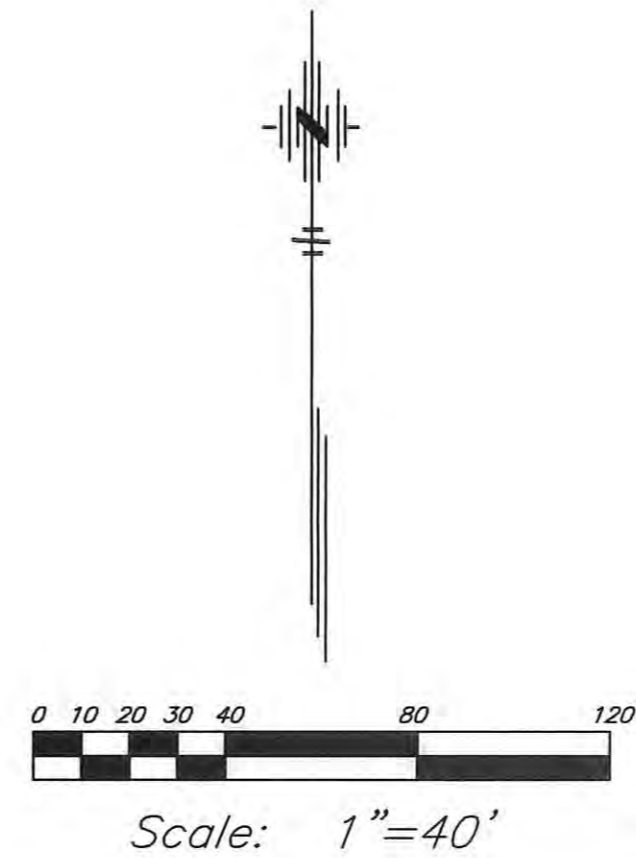
Being a replat of Lots 1-5, Block 1 and Lot 1, Block 2 South Ridge First Addition, a map of which is recorded in Cabinet No. 2, No. 408, Ellis County Register of Deeds, Hays, Kansas.



Notes:

- 1.) Total area this Plat= 4.05 Acres.
2.) For Lots 1-5, Block 1 and Lot 1 Block 2, South Ridge First Addition, South Ridge Development L.L.C. has designated certain areas of land as common area intended for use by home owners in Lots 1-5, Block 1 and Lot 1, Block 2, South Ridge First Addition, for recreation and other related activities.

The designated areas are not dedicated hereby for use by the general public but are dedicated to the common use and enjoyment of the homeowners in Lots 1-5, Block 1 and Lot 1, Block 2, South Ridge First Addition, as more fully provided in the declaration of covenants, conditions and restrictions applicable to Lots 1-5, Block 1 and Lot 1, Block 2, South Ridge First Addition, said declaration of covenants, conditions and restrictions is herein incorporated and more a part of this Plat.



LEGEND

- Lot Number- 1
Block Number- 2
5/8" Rebar w/LS 42 Cap Found in Conc.-

EASEMENTS:

Easements are hereby dedicated for public use, as utility easement right-of-way which are shown as lying between the dashed lines in widths indicated and as set forth on this plat unless otherwise noted, and said easements may be employed for the purpose of installing, repairing and maintaining gas lines, electric lines, and all other forms and types of public utilities now or hereafter used by the public over, under, and along the strips marked "easement".

STREETS:

Streets, avenues, and drives shown on this plat and not heretofore dedicated to and for public use are hereby so dedicated.

SURVEYOR'S CERTIFICATION:

I, Dale K. Owings, Land Surveyor in the State of Kansas, do hereby certify that I have accurately surveyed and platted this subdivision and have located all monuments as shown. Said described survey was completed on July 22nd, 2005.

Dale K. Owings, P.E.



I do hereby certify that I have reviewed the above plat of survey as provided by K.S.A. 58-2005 and I find it to meet all requirements of this act.

Date: 8-24-05
Jerol J. DeBoer, P.E.
Land Surveyor



OWNERS:

STATE OF KANSAS
COUNTY OF ELLIS

Know all men by these presents that I, the undersigned property owner of the Tracts as above set forth in the Surveyor's Certification, have caused the same to be surveyed and platted into Lots, Blocks, Easements, Streets, and platted this subdivision and have located all monuments as shown. Said described survey was completed on July 22nd, 2005.

South Ridge Development L.L.C.

Be it remembered on this 25 day of August, 2005, before me, a Notary Public in and for said County and State, came Douglas J. Shaw to me personally known to be the same person who executed the foregoing instrument of writing and duly acknowledged the execution of the same, in testimony whereof, I have hereunto set my hand and affixed my notarial seal.

Notary Public

My Commission Expires: 1-2-14

PLANNING COMMISSION:

This replat of South Ridge First Addition has been submitted to and approved by the City of Ellis Planning Commission this 10th day of August, 2005.

Chairman

Secretary

CITY COUNCIL:

The dedications shown on this plat accepted by the City Council of the City of Ellis, Kansas, this 14th day of August, 2005.

Mayor

City Clerk

CITY ATTORNEY:

The above and foregoing plat is approved by City Attorney of Ellis, Kansas this 14th day of September, 2005.

City Attorney

COUNTY CLERK CERTIFICATE:

STATE OF KANSAS
COUNTY OF ELLIS

I do hereby certify that there are no delinquent general taxes, no unpaid current general taxes, no unpaid forfeited taxes, and no redeemable tax sales against any of the land involved in this plat.

I further certify that I have received all statutory fees in connection with the plat.

Given under my hand and seal at Hays, Kansas this 26 day of September, A.D. 2005.

County Clerk

REGISTER OF DEEDS:

STATE OF KANSAS
COUNTY OF ELLIS

This is to certify that this instrument was filed for record in the Register of Deeds Office on the 29 day of September, 2005, in Book Cab, Page 424.

Deputy Register of Deeds

Entered on transfer of record this 29 day of September, 2005.

County Clerk



PLAT
CEDAR RIDGE TOWN HOMES
CITY OF ELLIS
PENCO ENGINEERING, P.A.
PLAINVILLE, KS
DESIGNED BY: DKO SCALE: 1"=40'
DRAWN BY: CAO JOB NO.: S005027
CHECKED BY: JUD DATE: 2005

File name: S:\AC2\10\1005027\Site.dwg

ORDINANCE NO. 1288
AN ORDINANCE VACATING A CEDAR ALLEY IN THE CITY OF ELLIS, KANSAS
WHEREAS a portion of city owned between Lot One (1), Two (2), and Three (3) of the Cedar Addition in the City of Ellis...