

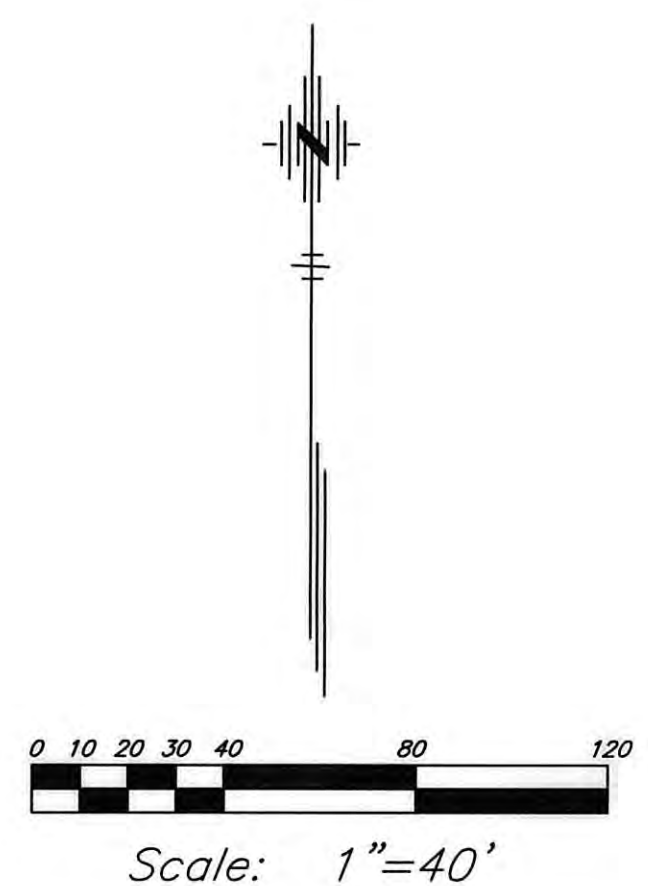
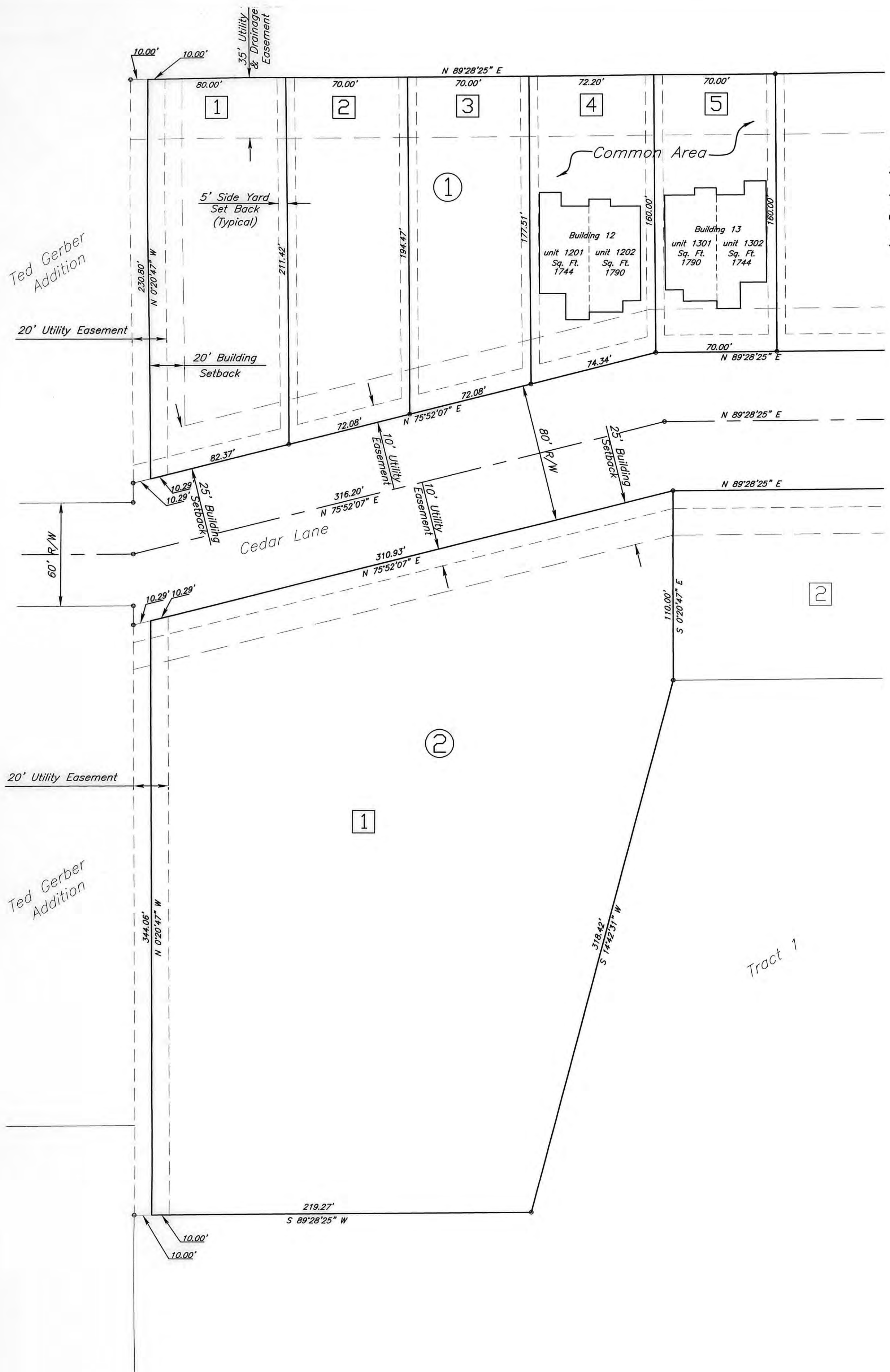
REPLAT OF CEDAR RIDGE TOWN HOMES Lots 1-5, Block 1, & Lot 1, Block 2, South Ridge First Addition Ellis, Kansas

Being a replat of Lots 1-5, Block 1 and Lot 1, Block 2 South Ridge First Addition, a map of which is recorded in Cabinet No. 2, No. 408, Ellis County Register of Deeds, Hays, Kansas.

Notes:

- 1.) Total area this Plat= 3.92 Acres.
- 2.) For Lots 4 & 5, Block 1, South Ridge First Addition, South Ridge Development L.L.C. has designated certain areas of land as common area intended for use by home owners in Lots 4 & 5, Block 1, South Ridge First Addition, for recreation and other related activities.

The designated areas are not dedicated hereby for use by the general public but are dedicated to the common use and enjoyment of the homeowners in Lots 4 & 5, Block 1, South Ridge First Addition, as more fully provided in the declaration of covenants, conditions and restrictions applicable to Lots 4 & 5, Block 1, South Ridge First Addition, said declaration of covenants, conditions and restrictions is herein incorporated and made a part of this Plat.



LEGEND

- Lot Number- ①
- Block Number- ②
- 5/8" Rebar w/ LS42 Cap Set Previously- •

EASEMENTS:

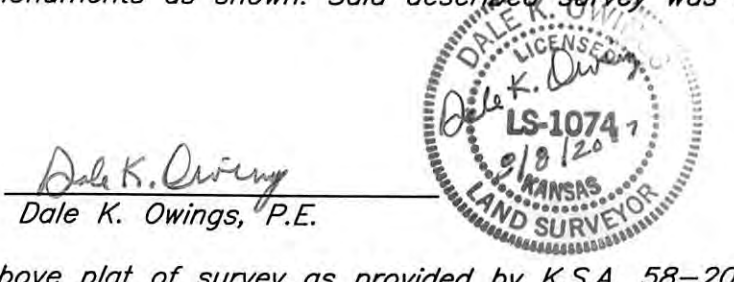
Easements are hereby dedicated for public use, as utility easement right-of-way which are shown as lying between the dashed lines in widths indicated and as set forth on this plat unless otherwise noted, and said easements may be employed for the purpose of installing, repairing and maintaining gas lines, electric lines, and all other forms and types of public utilities now or hereafter used by the public over, under, and along the strips marked "easement".

STREETS:

Streets, avenues, and drives shown on this plat and not heretofore dedicated to and for public use are hereby so dedicated.

SURVEYOR'S CERTIFICATION:

I, Dale K. Owings, Land Surveyor in the State of Kansas, do hereby certify that I have accurately surveyed and platted this subdivision and have located all monuments as shown. Said described survey was completed on July 20th, 2007.



I do hereby certify that I have reviewed the above plat of survey as provided by K.S.A. 58-2005 and I find it to meet all requirements of this act.

Date: 8-8-07
 Jergal A. DeBoer, P.E.
 Land Surveyor



OWNERS:

STATE OF KANSAS
COUNTY OF ELLIS

Know all men by these presents that I, the undersigned property owner of the Tracts as above set forth in the Surveyor's Certification, have caused the same to be surveyed and platted into Lots, Blocks, Easements, Streets, the same to be known as REPLAT OF CEDAR RIDGE TOWN HOMES: the Streets are hereby dedicated to and for the use of the public, and easements as indicated on the accompanying plat are hereby granted to the public for the purpose of constructing, operating, maintaining, and repairing all public utilities.

Douglas J. Shaw
 South Ridge Development L.L.C.

Be it remembered on this 3 day of October, 2007, before me, a Notary Public in and for said County and State, came Douglas J. Shaw to me personally known to be the same person who executed the foregoing instrument of writing and duly acknowledged the execution of the same, in testimony whereof, I have hereunto set my hand and affixed my notarial seal.

Charlene Weber
 Notary Public
 My Commission Expires: June 10, 2010

PLANNING COMMISSION:

This REPLAT OF CEDAR RIDGE TOWN HOMES has been submitted to and approved by the City of Ellis Planning Commission this 4th day of November, 2007.

Robert Hummer Chairman
Mary Ann Wing Secretary

CITY COUNCIL:

The dedications shown on this plat accepted by the City Council of the City of Ellis, Kansas, this 15th day of October, 2007.

Daniel R. McDaniel Mayor
 ATTEST: Mary Ann Wing City Clerk

CITY ATTORNEY:

The above and foregoing plat is approved by City Attorney of Ellis, Kansas this 15th day of October, 2007.

David Shaw
 City Attorney

COUNTY CLERK CERTIFICATE:

STATE OF KANSAS
COUNTY OF ELLIS

I do hereby certify that there are no delinquent general taxes, no unpaid current general taxes, no unpaid forfeited taxes, and no redeemable tax sales against any of the land involved in this plat.

I further certify that I have received all statutory fees in connection with the plat.

Given under my hand and seal at Hays, Kansas this 18th day of October, A.D. 2007.

Alberta Klaus
 County Clerk



REGISTER OF DEEDS:

STATE OF KANSAS
COUNTY OF ELLIS

This is to certify that this instrument was filed for record in the Register of Deeds Office on the 18 day of October, 2007, in Book Cab. Page # 428

Mary Ann Wing Deputy
Rebecca Hargis Register of Deeds



Entered on transfer of record this ___ day of ___, 2007.

Amend to Declar. - BK: 680 Pg: 914

PLAT	
REPLAT OF CEDAR RIDGE TOWN HOMES, CITY OF ELLIS	
PENCO ENGINEERING, P.A. PLAINVILLE, KS	
DESIGNED BY: DKO	SCALE: 1" = 40'
DRAWN BY: CRB	JOB NO.: S007030
CHECKED BY: JUD	DATE: 2007

8/17/2007 1:53 PM \\loc2\p01s007030\Replat SITE.dwg