

CENTENNIAL ESTATES FOURTH ADDITION

TO THE CITY OF HAYS, KANSAS

LEGAL DESCRIPTION

A TRACT OF LAND IN THE NORTHWEST QUARTER OF SECTION 34, TOWNSHIP 13 SOUTH, RANGE 18 WEST OF THE SIXTH PRINCIPAL MERIDIAN, ELLIS COUNTY, KANSAS, AND FURTHER DESCRIBED AS FOLLOWS:

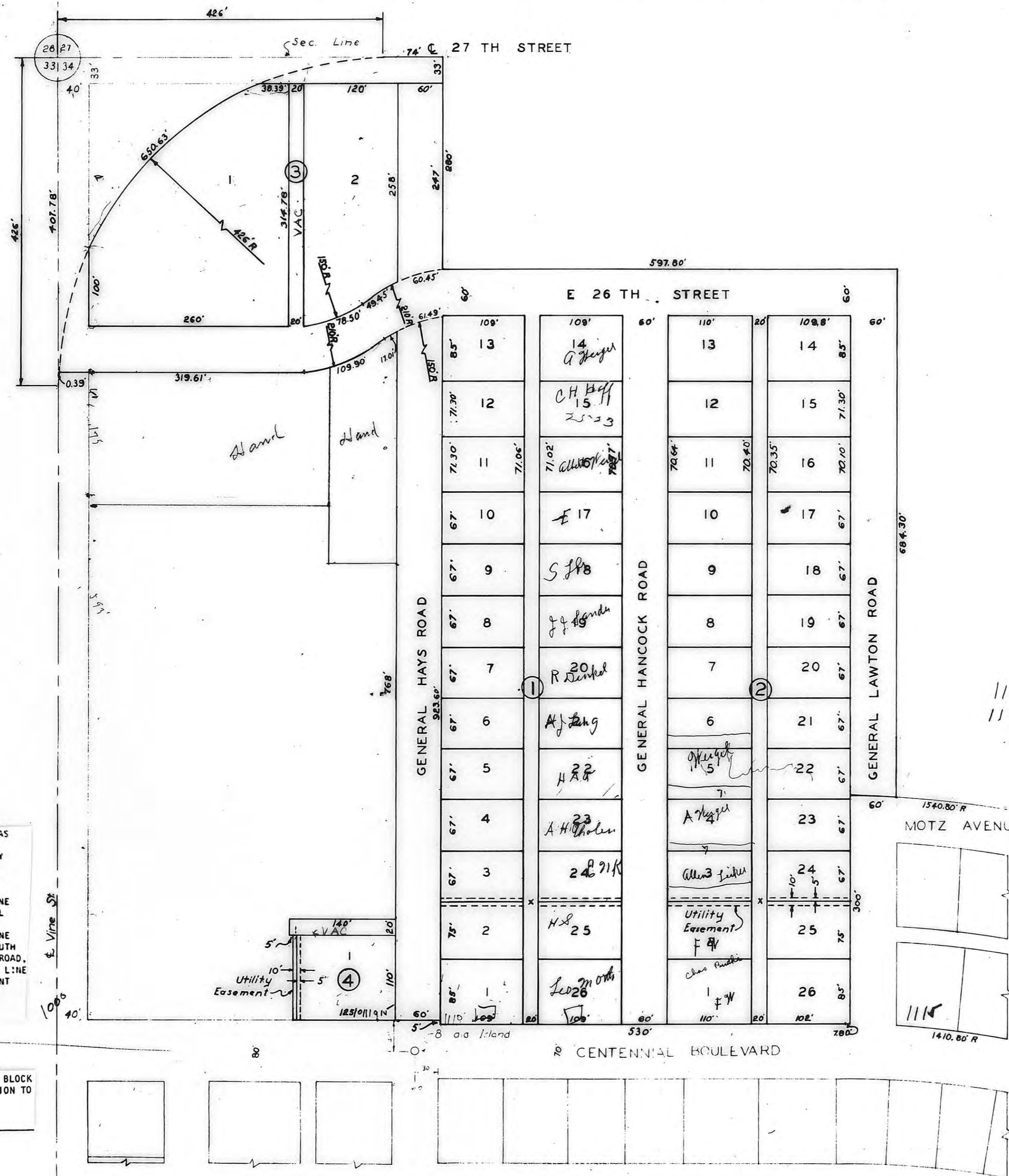
STARTING AT THE NORTHWEST CORNER OF SECTION 34, TOWNSHIP 13 SOUTH, RANGE 18 WEST OF THE SIXTH P.M.; THENCE SOUTH, ALONG THE WEST LINE OF SAID SECTION, 407.78 FEET; THENCE EAST AT 90 DEGREES TO SAID WEST SECTION LINE 0.39 FOOT TO THE POINT OF BEGINNING; THENCE CONTINUING EAST AT 90 DEGREES TO SAID WEST SECTION LINE, A DISTANCE OF 319.61 FEET; THENCE EAST AND LEFT ON A CURVE OF 210 FOOT RADIUS, A CURVE DISTANCE OF 109.90 FEET; THENCE EAST AND RIGHT ON A CURVE OF 150 FOOT RADIUS, A CURVE DISTANCE OF 17.01 FEET; THENCE SOUTH PARALLEL TO THE WEST LINE OF SAID SECTION, A DISTANCE OF 768 FEET; THENCE WEST AT 90 DEGREES, A DISTANCE OF 140 FEET; THENCE SOUTH AT 90 DEGREES, A DISTANCE OF 20 FEET; THENCE EAST AT 90 DEGREES, A DISTANCE OF 5 FEET; THENCE SOUTH AT 90 DEGREES A DISTANCE 110 FEET TO THE NORTH LINE OF CENTENNIAL BOULEVARD; THENCE EAST ALONG THE NORTH LINE OF CENTENNIAL BOULEVARD, A DISTANCE OF 195 FEET; THENCE SOUTH AT 90 DEGREES, A DISTANCE OF 5 FEET; THENCE EAST ALONG THE NORTH LINE OF CENTENNIAL BOULEVARD, A DISTANCE OF 530 FEET; THENCE EAST AND RIGHT ON A CURVE OF 1410.80 FOOT RADIUS, A CURVE DISTANCE OF 7.80 FEET; THENCE NORTH PARALLEL TO THE WEST LINE OF SAID SECTION 34, A DISTANCE OF 300 FEET; THENCE EAST AND RIGHT ON A CURVE OF 1540.80 FOOT RADIUS, A CURVE DISTANCE OF 60 FEET; THENCE NORTH PARALLEL TO THE WEST LINE OF SAID SECTION 34, A DISTANCE OF 684.30 FEET; THENCE WEST, PARALLEL TO THE NORTH LINE OF SAID SECTION 34, A DISTANCE OF 597.80 FEET; THENCE NORTH PARALLEL TO THE WEST LINE OF SAID SECTION 34, A DISTANCE OF 280 FEET TO THE NORTH LINE OF SAID SECTION 34; THENCE WEST ALONG THE NORTH LINE OF SAID SECTION 34, A DISTANCE OF 74 FEET; THENCE WEST AND LEFT ON A CURVE OF 426 FOOT RADIUS, A CURVE DISTANCE OF 650.63 FEET TO THE POINT OF BEGINNING.

ORDINANCE NO. 2392

AN ORDINANCE VACATING THE ALLEY DESCRIBED AS FOLLOWS: A TRACT OF LAND IN BLOCK 4, CENTENNIAL ESTATES FOURTH ADDITION TO THE CITY OF HAYS, KANSAS, MORE FULLY DESCRIBED AS FOLLOWS: BEGINNING AT A POINT THAT IS 110 FEET NORTH OF THE NORTH LINE OF CENTENNIAL BOULEVARD AND 133 FEET WEST OF THE WEST LINE OF GENERAL HAYS ROAD; THENCE NORTH PARALLEL TO THE WEST LINE OF GENERAL HAYS ROAD, 20 FEET; THENCE WEST PARALLEL TO THE NORTH LINE OF CENTENNIAL BOULEVARD, 7 FEET; THENCE SOUTH PARALLEL TO THE WEST LINE OF GENERAL HAYS ROAD, 20 FEET; THENCE EAST PARALLEL TO THE NORTH LINE OF CENTENNIAL BOULEVARD, 7 FEET TO THE POINT OF BEGINNING.
Book: 260 Pg: 101

ORDINANCE NO. 2332

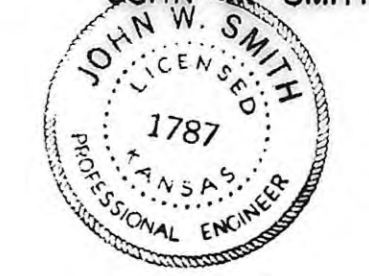
AN ORDINANCE VACATING THE ALLEY LOCATED IN BLOCK THREE (3), CENTENNIAL ESTATES FOURTH ADDITION TO THE CITY OF HAYS, KANSAS.
Book: 273 Pg: 230



ENGINEER'S CERTIFICATE
I, JOHN W SMITH, A LICENSED PROFESSIONAL ENGINEER DO HEREBY CERTIFY THIS PLAT TO BE TRUE AND CORRECT TO THE BEST OF MY KNOWLEDGE.

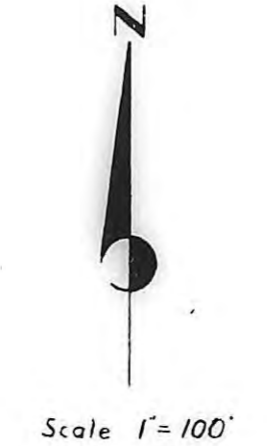
SIGNED THIS 13 DAY OF Dec. 1962

John W. Smith
JOHN W. SMITH



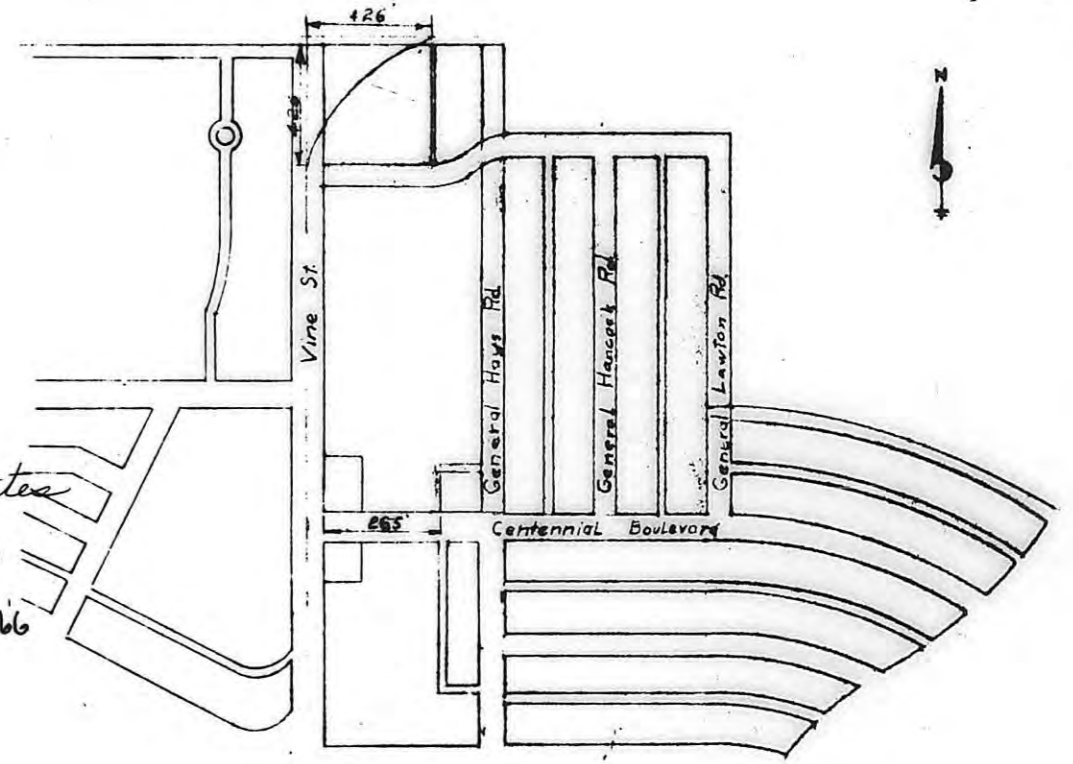
I HEREBY CERTIFY THAT THIS PLAT WAS FIRST SUBMITTED TO THE CITY PLANNING COMMISSION AND BY THE CITY PLANNING COMMISSION TO THE GOVERNING BODY OF THE CITY OF HAYS, KANSAS AND BY SUCH GOVERNING BODY DULY APPROVED ON December 13, 1962

Dorothy Soderblom
DOROTHY SODERBLOM
CITY CLERK



110' Double
110' Hat

Amendment to Restrictive
Covenants in Centennial Estates
Fourth Addition. Recorded in
Book 228, Page 190. June 28 1966



LOCATION MAP
Scale 1"=500'

THIS IS A DIRECT PHOTOGRAPHIC REPRODUCTION OF THE OFFICIAL INSTRUMENT (RECORDED PLAT).
THIS REPRODUCTION WAS MADE BY BUCHER & WILLIS CONSULTING ENGINEERS, PLANNERS & ARCHITECTS IN JUNE 1979

STATE OF KANSAS }
ELLIS COUNTY }
This instrument was filed for record
DEC 18 1962
120 copies M recorded in
Plate of Plans page 32
Filed 2:00 P.M.
Dec. 20 1962

DRAWN BY B.K.B.		JOHN W. SMITH	
CHECKED BY J.W.S.		CONSULTING ENGINEER AND ASSOCIATES	
DATE Nov 62	JOB NO. 62-233	HAYS	KANSAS
CENTENNIAL ESTATES FOURTH ADDITION			
HAYS		KANSAS	

SHEET 1 OF 1