

BEN DREILING ADDITION TO THE CITY OF HAYS KANSAS

SAINT JOSEPH'S CEMETERY

LEGAL DESCRIPTION:

THE EAST ONE-HALF OF LOT OR BLOCK 57, LEBOLD ALLEN AND COMPANY'S ADDITION TO HAYS CITY, NOW THE CITY OF HAYS, KANSAS.

APPROVED BY HAYS CITY PLANNING COMMISSION, JUNE 25, 1956

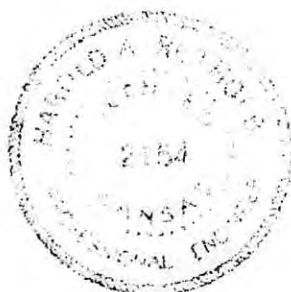
P. F. Felten
P. F. FELTEN, CHAIRMAN

DEEDED TO CITY OF HAYS
MAY 31, 1956
RECORDED IN BOOK 153,
O & G, PAGE 93

I hereby certify that this plat was approved by the Governing Body of the City of Hays this 24th day of September, 1956.

Dorothy Schickler
City Clerk

HAROLD A. ROTHGEB
ARCHITECTURAL & ENGINEERING
HAYS SERVICE KANSAS

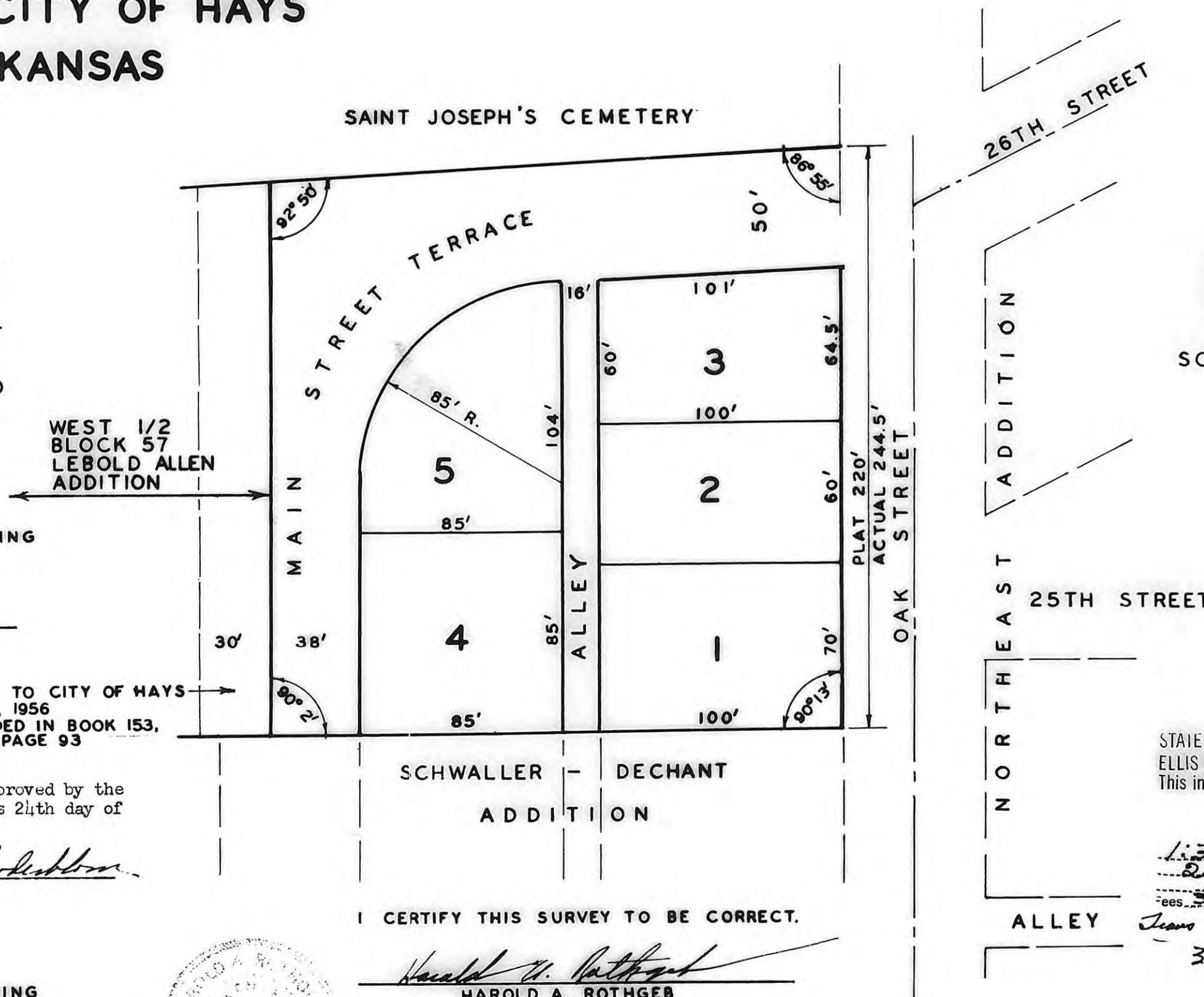


I CERTIFY THIS SURVEY TO BE CORRECT.

Harold A. Rothgeb
HAROLD A. ROTHGEB

JUNE 18, 1956

For Dedication See Bk 156 page 544



SCALE: 1" = 50'

STATE OF KANSAS }
ELLIS COUNTY }
This instrument was filed for record

SEP 26 1956

1:30 o'clock P.M. recorded in
2 of Plat page 50
ees 3.00
B. R. Schmidt
Register of Deeds

ALLEY
Jeans 50
3.50

THIS IS A DIRECT PHOTOGRAPHIC REPRODUCTION OF THE OFFICIAL INSTRUMENT (RECORDED PLAT).

THIS REPRODUCTION WAS MADE BY BUCHER & WILLIS, CONSULTING ENGINEERS, PLANNERS & ARCHITECTS IN JUNE 1979