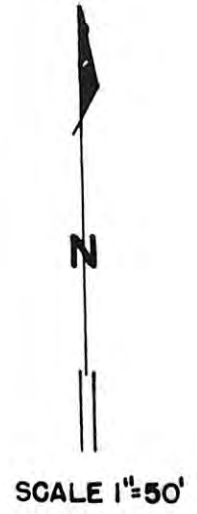
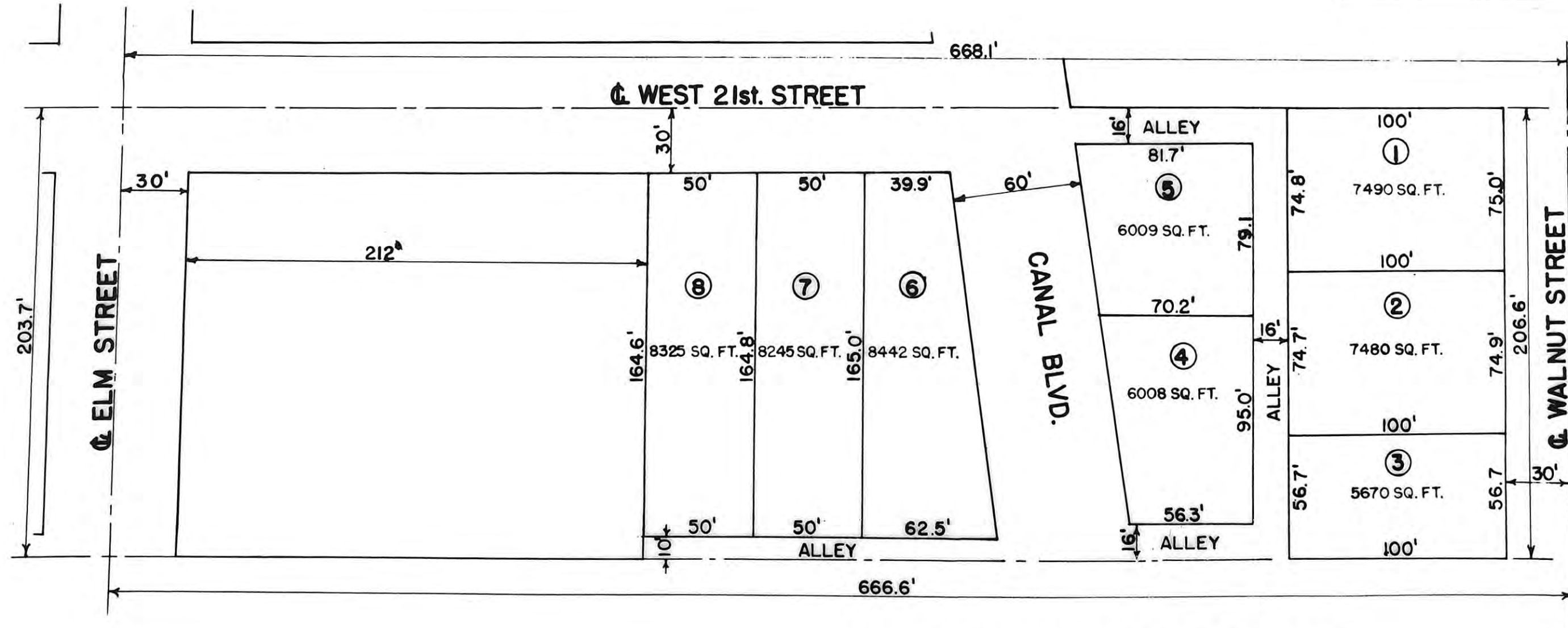


RE-PLAT OF LOTS 1,2,3,4,5,6,7,8, & 9 OF FULGHUMS ADDITION
BEING A PORTION OF ORIGINAL BLOCK 14, LEBOLD ALLEN &
COMPANY ADDITION

THIS IS A DIRECT PHOTOGRAPHIC
REPRODUCTION OF THE OFFICIAL
INSTRUMENT (RECORDED PLAT).

THIS REPRODUCTION WAS MADE BY
BUCHER & WILLIS CONSULTING
ENGINEERS, PLANNERS & ARCHITECTS
IN JUNE 1979



SURVEYED: FEB. 5, 1951
PLATTED: FEB. 11, 1951
ARCHITECTURAL & ENGINEERING SERVICE
HAYS, KANSAS

I HEREBY CERTIFY THE ABOVE RE-PLAT TO BE
CORRECT, AS SAME WAS SURVEYED AND PLATTED
BY ME. *Harold A. Ritzler*