

PLAT OF GOLDEN BELT THIRD ADDITION HAYS, KANSAS

LEGAL DESCRIPTION:

A tract of land in the Northeast Quarter (NE ¼) of Section Thirty-Four (34), Township Thirteen (13) South, Range Eighteen (18) West of the 6th Principal Meridian, Ellis County, Kansas, and more particularly described as follows:

Commencing at the Northwest corner of the Northeast Quarter (NE ¼) of Section 34, Township 13 South, Range 18 West; THENCE on a bearing of N 90°00'00" E along the North line of said Northeast Quarter a distance of 1105.36 feet; THENCE on a bearing of S 0°21'15" W a distance of 310.00 feet to the point of beginning; THENCE continuing on the last described course a distance of 60.00 feet; THENCE on a bearing of S 90°00'00" W a distance of 40.90 feet; THENCE on a bearing of S 0°26'35" W a distance of 998.26 feet; THENCE on a bearing of S 90°00'00" W a distance of 130.00 feet; THENCE on a bearing of S 0°26'35" W a distance of 123.51 feet; THENCE on a bearing of N 89°53'15" E a distance of 425.97 feet; THENCE on a bearing of N 0°00'00" E a distance of 122.67 feet; THENCE on a bearing of N 90°00'00" E a distance of 5.00 feet; THENCE on a bearing of N 0°26'35" E a distance of 1,058.26 feet; THENCE on a bearing of N 90°00'00" W a distance of 259.20 feet to the point of beginning. Said tract contains 8.434 acres, more or less

STREETS, EASEMENTS AND PUBLIC PARKS

Streets, boulevards, drives, alleys and pedestrian walkways as shown on this plat and not heretofore dedicated to and for public use are hereby so dedicated.

Easements are hereby dedicated for public use as utility easement right-of-way which are shown as lying between the dashed lines in widths indicated and as set forth on this plat, and said easements may be employed for the purpose of installing, repairing and maintaining gas lines, electric lines, telephone lines and all other forms and types of public utilities, new or hereafter used by the public over, under and along the strips marked "Utility Esm't."

OWNER'S CERTIFICATE

Know all men by these presents, that we, the undersigned property owners of the land above described, have caused the same to be surveyed and platted into lots, blocks, streets, alleys, easements, public parks and pedestrian walkways are hereby dedicated to and for the use of the public, and easements as indicated on the accompanying plat are hereby granted to the public for the purpose of constructing, operating, maintaining and repairing all public utilities.

WESTERN PLAINS SERVICE CORP., INC.

By James Desbien

NOTARY CERTIFICATES

State of Kansas, County of Ellis, ss

Be it remembered that on this 7th day of January, 1977, before me, a notary public in and for said County and State, came Oren M. Windholz, President, and James Desbien, Secretary, of Western Plains Service Corp., Inc., to me personally known to be the same persons who executed the foregoing instrument of writing and duly acknowledged the execution of same. In testimony whereof, I have hereunto set my hand and affixed my notarial seal the day and year above written.

[Signature]
Notary Public

My Commission Expires 11/1/82

APPROVALS

This plat of GOLDEN BELT THIRD ADDITION has been submitted to and approved by the City of Hays Planning Commission this 17 day of January, 1977.

The dedication shown on this plat is accepted by the City Commission of the City of Hays, Kansas, this 27th day of January, 1977.

ATTEST:

CITY OF HAYS, KANSAS

[Signature]
City Clerk

[Signature]
Mayor

RECORDED:

State of Kansas, County of Ellis, ss

This is to certify that this instrument was filed for record in the Register of Deeds Office on the 15 day of February, 1977, in Book 24, Page 44.

Ordinance Book 280 p 700
Plat & Dedication 280 p 701
Resolution 280 p 708

[Signature]
Register of Deeds
[Signature]
Deputy

SURVEYOR'S CERTIFICATE:

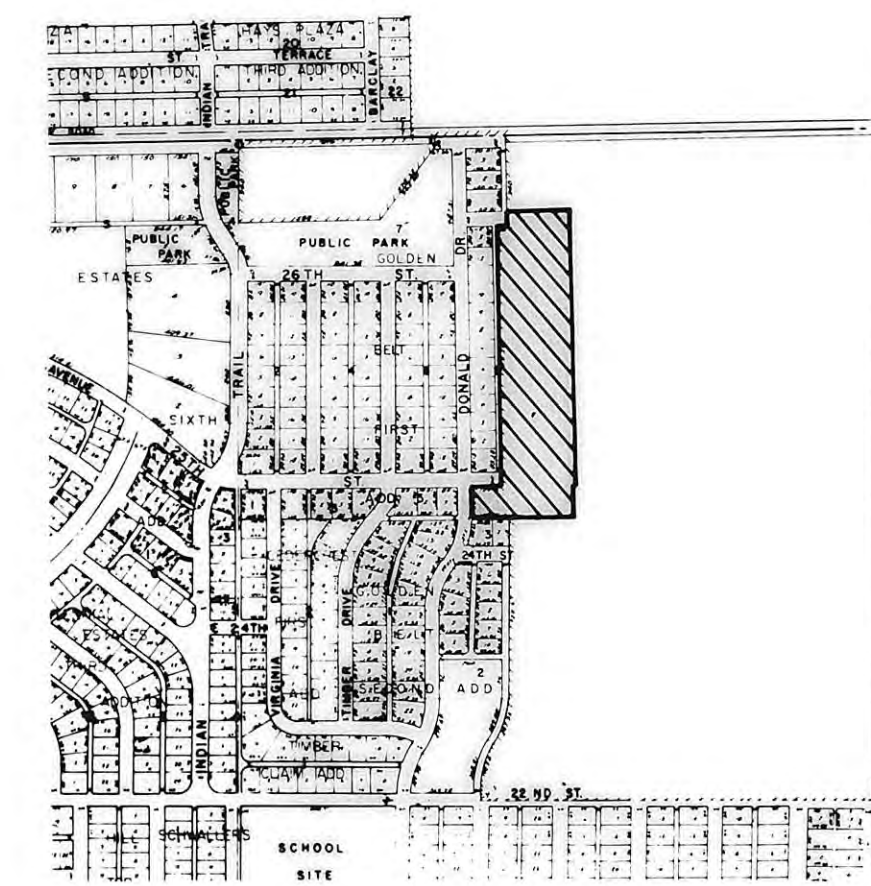
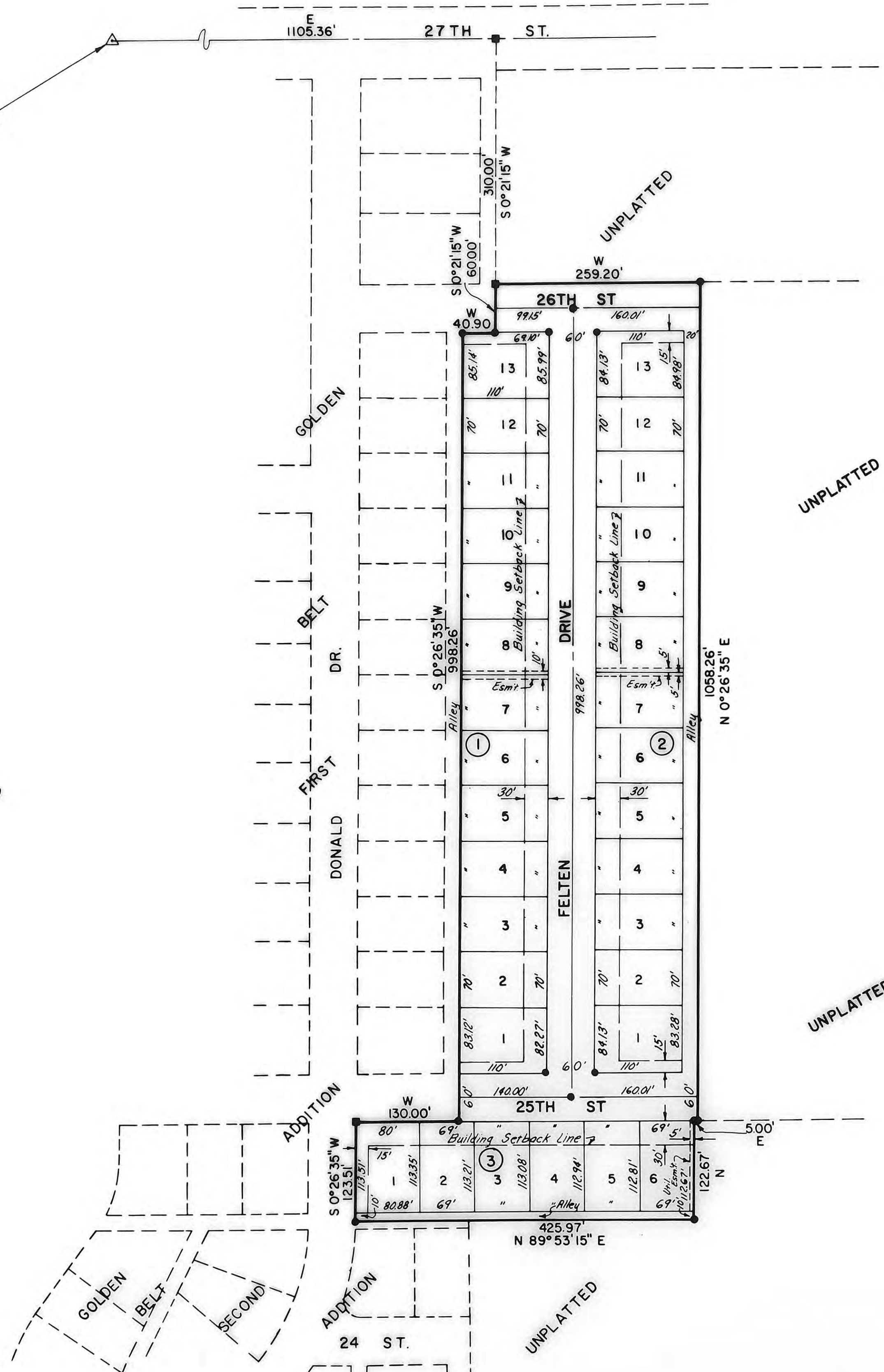
I, a licensed professional engineer in the State of Kansas, do hereby certify this plat to be true and correct to the best of my knowledge; and that all iron bars as shown have been accurately set. Survey completed in November, 1976.

[Signature]
James R. Flemons, P.E.

NW Cor. NE 1/4,
Sec. 34, T13S, R18W

LEGEND

- ¼" Rebar (Found)
- ¼" Rebar (Set)
- △ Section Corner (Found)



LOCATION MAP

THIS IS A DIRECT PHOTOGRAPHIC REPRODUCTION OF THE OFFICIAL INSTRUMENT (RECORDED PLAT).

THIS REPRODUCTION WAS MADE BY BUCHER & WILLIS CONSULTING ENGINEERS, PLANNERS & ARCHITECTS IN AUGUST, 1979.

PREPARED BY
BUCHER & WILLIS
CONSULTING ENGINEERS, PLANNERS & ARCHITECTS
SALINA, KANSAS KANSAS CITY, MO.

