

PLAT OF GOLDEN BELT FIFTH ADDITION

HAYS, KANSAS

LEGAL DESCRIPTION OF GOLDEN BELT 5th ADDITION
A tract of land in the Northeast Quarter (NE_{1/4}) of Section Thirty-four (34), Township Thirteen (13) South, Range Eighteen (18) West of the 6th Principal Meridian, Ellis County, Kansas, and more particularly described as follows:

Commencing at the Northeast corner of the Northeast Quarter (NE_{1/4}) of Section 34, Township 13 South, Range 18 West, THENCE on an assumed bearing of S 0° 28' 10" W along the East line of said Northeast Quarter, a distance of 1698.26 feet to the point of beginning; THENCE continuing on the last described course, a distance of 941.23 feet to the Southeast corner of said Northeast Quarter; THENCE S 90° 00' 00" W along the South line of said Northeast Quarter, a distance of 1,676.86 feet; THENCE N 0° 00' 00" E, a distance of 31.13 feet; THENCE on a curve to the right having a radius of 325.89 feet, an arc distance of 196.15 feet; THENCE on a curve to the left having a radius of 379.23 feet, an arc distance of 228.26 feet; THENCE tangent to said curve N 0° 00' 00" E, a distance of 720.67 feet; THENCE N 90° 00' 00" E a distance of 387.38 feet; THENCE on a curve to the right having a radius of 470.00 feet, the initial tangent of which has a bearing of S 6° 15' 31" W, an arc distance of 76.26 feet; THENCE tangent to said curve S 15° 33' 20" W, a distance of 120.25 feet; THENCE S 83° 53' 05" E, a distance of 143.55 feet; THENCE on a curve to the left having a radius of 330.00 feet; THENCE tangent to said curve S 89° 53' 05" E, a distance of 1042.70 feet to the point of beginning. Said tract contains 36.0978 acres, more or less.

STREETS, EASEMENTS AND PUBLIC PARKS

Streets, boulevards, drives, alleys and pedestrian walkways as shown on this plat and not heretofore dedicated to and for public use are hereby so dedicated.

Easements are hereby dedicated for public use as utility easement right-of-ways which are shown as lying between the dashed lines in widths indicated and as set forth on this plat, and said easements may be employed for the purpose of installing, repairing and maintaining gas lines, electric lines, telephone lines and all other forms and types of public utilities, new or hereafter used by the public over, under and along the strips marked "Utility Esm't."

OWNER'S CERTIFICATE

Know all men by these presents, that we, the undersigned property owners of the land above described, have caused the same to be surveyed and platted into lots, blocks, streets, alleys, easements, public parks and pedestrian walk ways are hereby dedicated to and for the use of the public, and easements as indicated on the accompanying plat are hereby granted to the public for the purpose of constructing, operating, maintaining and repairing all public utilities.

WESTERN PLAINS SERVICE CORP., INC.

By: *James Desbien*

NOTARY CERTIFICATE

State of Kansas, County of Ellis, ss
Be it remembered that on this 8th day of December, 1977, before me, a notary public in and for said County and State, came James Desbien, President of Western Plains Service Corp., Inc. to me personally known to be the same person who executed the foregoing instrument of writing and duly acknowledged the execution of same. In testimony whereof, I have hereunto set my hand and affixed my notarial seal the day and year above written.

Notary Public
Joseph C. Karlen

My Commission Expires
March 25, 1979

SURVEYOR'S CERTIFICATE:

I, James R. Flemmons, a licensed professional engineer in the State of Kansas, do hereby certify this plat to be true and correct to the best of my knowledge; and that all iron bars as shown have been accurately set. Survey completed in December, 1977.

James R. Flemmons
James R. Flemmons, P.E.

RECORDED:
State of Kansas, County of Ellis, ss

This is to certify that this instrument was filed for record in the Register of Deeds Office on the 26 day of January, 1978, in Book 2A Plate, Page 60

Ord. Book 286 p 133
Plat & Sub 286 p 138
Restoration 286 p 145
Dorothy Berg
Register of Deeds
Rose Ann Rupp
Deputy

APPROVALS

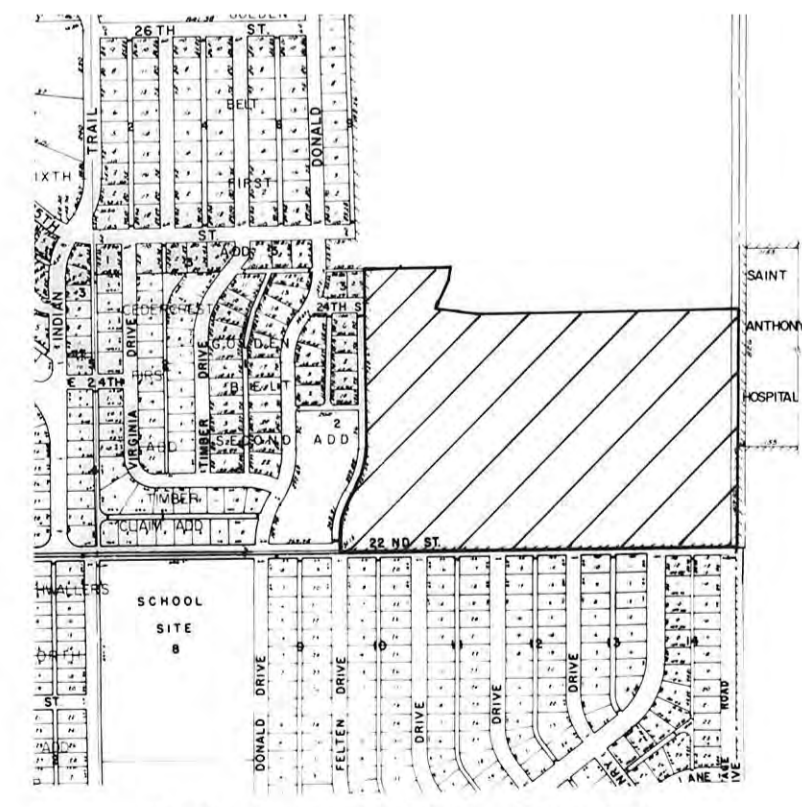
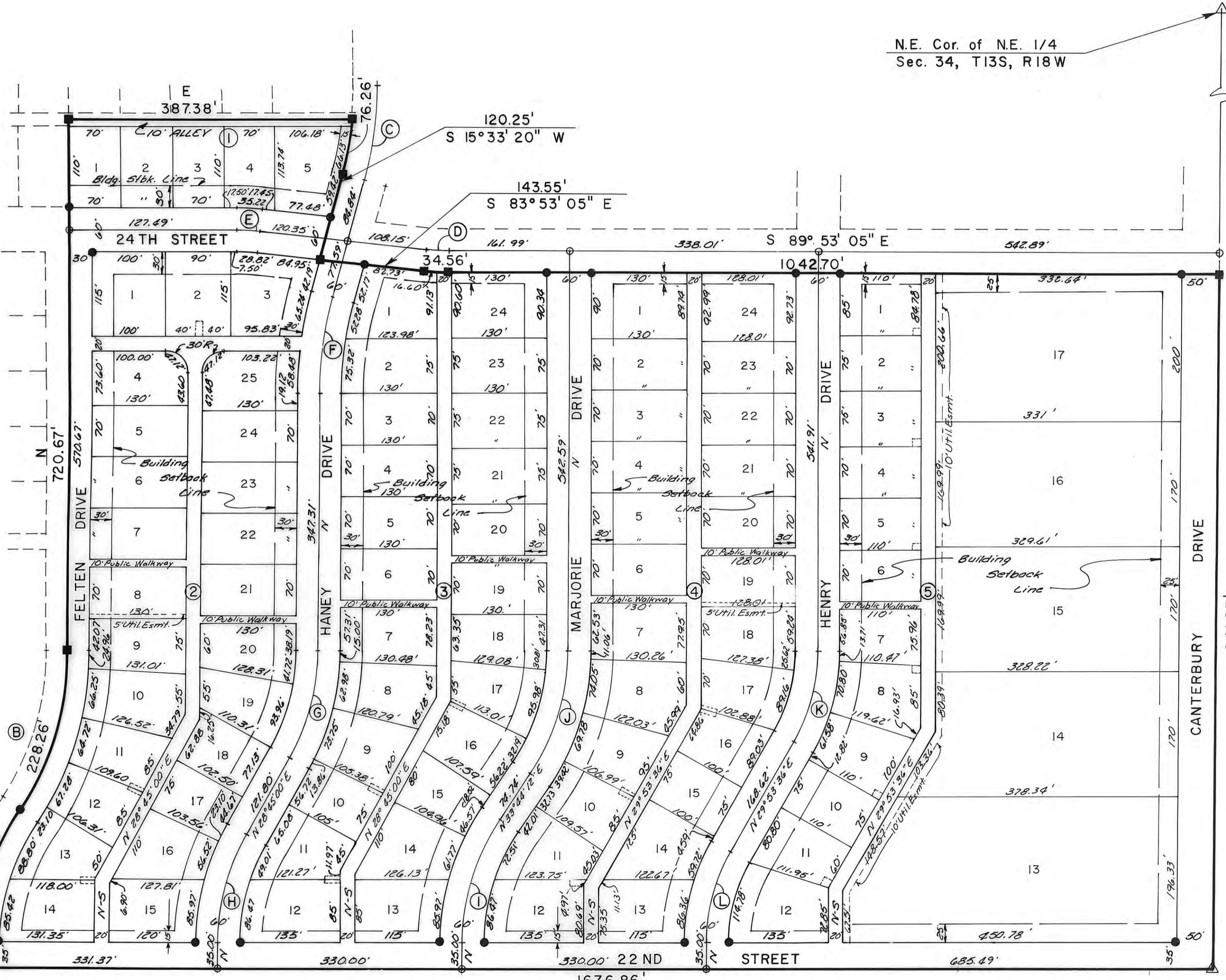
This plat of GOLDEN BELT FIFTH ADDITION has been submitted to and approved by the City of Hays Planning Commission this 19th day of December, 1977.

Blair J. Baird
Chairman
Marjoret E. Smith
Secretary

The dedication shown on this plat is accepted by the City Commission of the City of Hays, Kansas, this 19th day of January, 1978.

ATTEST: CITY OF HAYS, KANSAS
Norman Soderblom
City Clerk
George Philip
Mayor

N.E. Cor. of N.E. 1/4
Sec. 34, T13S, R18W



LOCATION MAP

LEGEND
 △ Section Corner
 1/2" Rebar Found
 1/2" Rebar Set
 "X" in Concrete

PREPARED BY
BUCHER & WILLIS
CONSULTING ENGINEERS, PLANNERS & ARCHITECTS
SALINA, KANSAS KANSAS CITY, MO.

CURVE DATA (at \mathcal{C} of Street)													
CURVE	Δ	R	T	Lc	CURVE	Δ	R	T	Lc	CURVE	Δ	R	Lc
(A)	34°29'12"	325.89'	101.15'	196.15'	(E)	6°06'55"	300'	16.02'	32.02'	(I)	33°44'12"	300'	90.97'
(B)	34°29'12"	379.23'	117.71'	228.26'	(F)	15°32'20"	500'	64.22'	135.75'	(J)	33°44'12"	300'	90.97'
(C)	15°00'00"	500'	65.83'	130.90'	(G)	28°45'00"	300'	128.15'	150.54'	(K)	29°53'36"	250'	66.74'
(D)	6°00'00"	300'	15.72'	31.42'	(H)	28°45'00"	300'	128.15'	150.54'	(L)	29°53'36"	250'	66.74'