

# Town Site of Grinnel

North East Quarter of Section 3  
 Township 11 Range 30  
 West of the 6<sup>th</sup> Principal Meridian  
 Gen County Kansas

North line of sec 3 Township 11 Range 30 W of 6 P.M.

NE Cor of Sec 3-11-30

not full

of the NE 1/4 of Sec 3 Township 11  
 Range 30 West of 6 P.M. Gen  
 County, Kansas

1<sup>st</sup> tier Blocks on the South side of K.P.R.W.

1-2-3-4-5-6 are fractional

1<sup>st</sup> Tier of Blocks on North side  
 of K.P.R.W. 7 8 9 10 11 + 12  
 are fractional

all other blocks except  
 fractional are 300 feet square  
 all streets running North + South  
 are 100 ft

all streets running East + West  
 are

all alleys 20 ft wide

all fractional lots subject  
 to measure

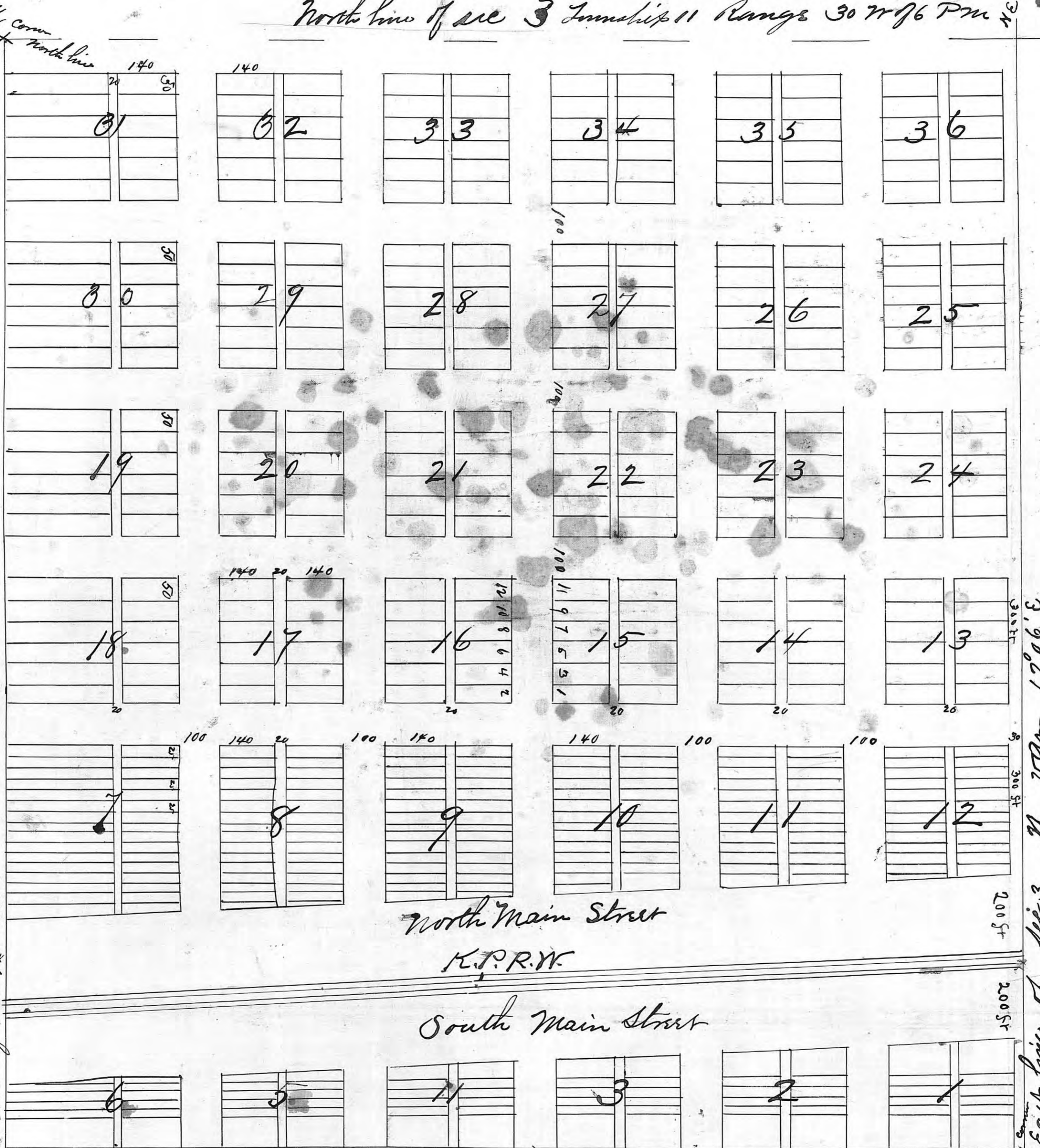
all lots of Blocks  
 1-2-3-4-5-6-7-8-9-10-11-12 are  
 25 ft by 140

all other lots 50 by 140 ft

State of Kansas }  
 Ellis County } A.S.

On this 22nd day of April 1879  
 before me a County Clerk in and for  
 Ellis County and State of Kansas  
 personally came Henry Daggelt  
 to me well known to be the  
 proprietor of the land at the time  
 the above plat was surveyed and  
 platted and acknowledged the plat to  
 me to be a true and correct plat  
 of the subdivision of the NE 1/4 of  
 Sec 3 Township 11 Range 30 W. of the  
 6 P.M.

West 1/4 line of NE 1/4 Sec



Scale 200 ft to the inch

State of Kansas }  
 Ellis County } A.S.

I hereby certify that the foregoing  
 Plat is a true and correct  
 copy of the original now on  
 file in my office attested  
 my hand and seal this  
 22 day of April 1879 at  
 2 P.M. J. W. Fountain  
 By Clerk of the Register  
 Deputy.

I certify that the foregoing Plat  
 and survey of the town of Grinnel  
 of the NE 1/4 of Sec 3 Township  
 11 Range 30 West of 6 P.M. Gen  
 County, Kansas is correct

J. W. Fountain  
 Surveyor  
 Apr 17<sup>th</sup> 1879.