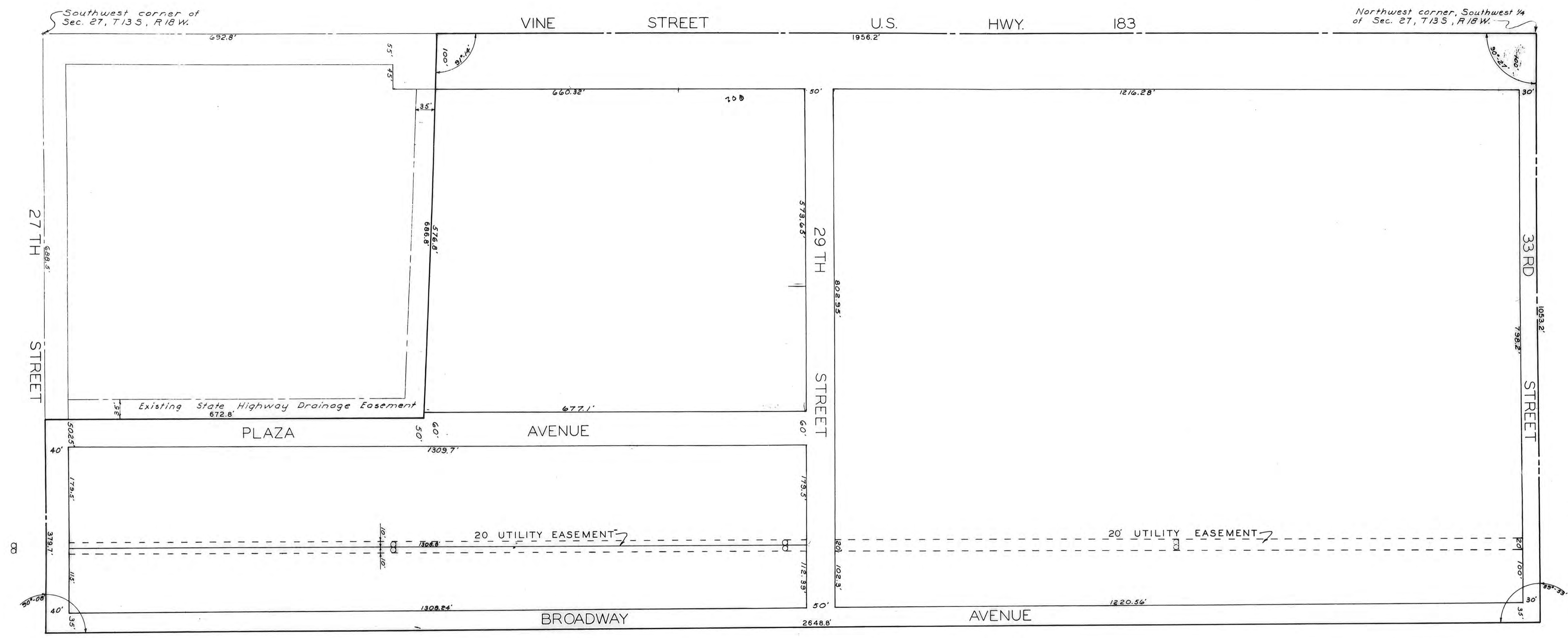
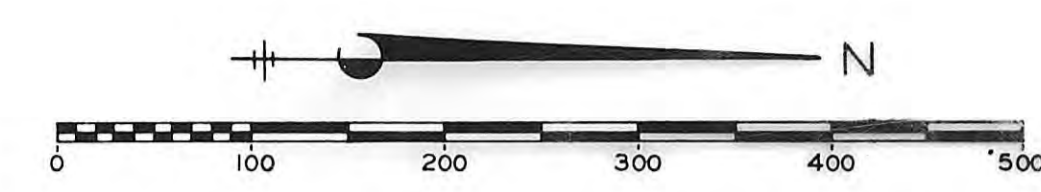


HAYS PLAZA FIRST ADDITION

TO THE CITY OF HAYS KANSAS



LEGAL DESCRIPTION

A TRACT OF LAND IN THE SOUTHWEST ONE-QUARTER OF SECTION 27, TOWNSHIP 13 SOUTH, RANGE 18 WEST OF THE SIXTH PRINCIPAL MERIDIAN, ELLIS COUNTY, KANSAS, AND FURTHER DESCRIBED AS FOLLOWS:
BEGINNING AT THE NORTHWEST CORNER OF THE SOUTHWEST ONE-QUARTER OF SAID SECTION 27; THENCE SOUTH ALONG THE SECTION LINE, 1956.2 FEET; THENCE EAST, WITH AN INTERNAL ANGLE OF 91 DEGREES 14 MINUTES, 686.8 FEET; THENCE SOUTH 672.8 FEET TO A POINT ON THE SOUTH LINE OF SAID SECTION, 688.5 FEET EAST OF THE SOUTHWEST CORNER OF SECTION 27; THENCE EAST ALONG THE SOUTH LINE OF SAID SECTION, 379.7 FEET; THENCE NORTHERLY ON A STRAIGHT LINE, 2,648.8 FEET TO A POINT ON THE NORTH LINE OF THE SOUTHWEST ONE-QUARTER OF SECTION 27, SAID POINT BEING 1,053.2 FEET EAST OF THE NORTHWEST CORNER OF SAID ONE-QUARTER SECTION; THENCE WEST 1,053.2 FEET ALONG THE NORTH LINE OF THE SOUTHWEST ONE-QUARTER OF SECTION 27, TO THE POINT OF BEGINNING.

ENGINEER'S CERTIFICATE

I, JOHN W. SMITH, A LICENSED PROFESSIONAL ENGINEER, DO HEREBY CERTIFY THIS PLAT TO BE TRUE AND CORRECT TO THE BEST OF MY KNOWLEDGE.

SIGNED THIS 14 DAY OF April, 1966.

John W. Smith
JOHN W. SMITH, P.E.
(Seal)

STATE OF KANSAS
ELLIS COUNTY
This instrument was filed for record

APR 19 1966
4:00 o'clock P.M. recorded in
226 of 228 page 615
Fees \$3.00
Register of Deeds

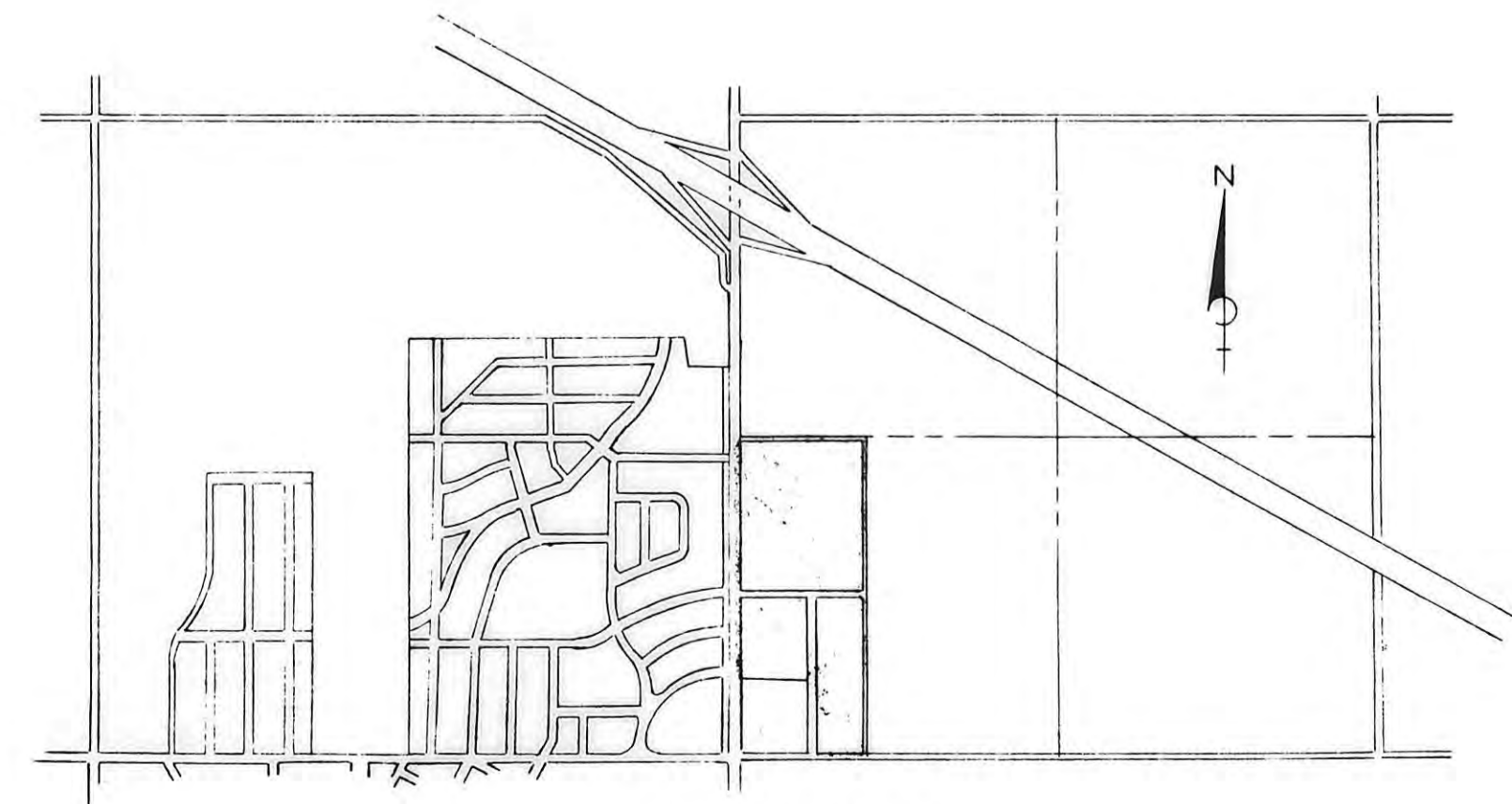
8330
Plat and
Ordinance 226-615
Resolution 226-619
Ordinance 226-620

I HEREBY CERTIFY THAT THIS PLAT WAS FIRST SUBMITTED TO THE CITY PLANNING COMMISSION AND BY THE CITY PLANNING COMMISSION TO THE GOVERNING BODY OF THE CITY OF HAYS, KANSAS AND BY SUCH GOVERNING BODY DULY APPROVED ON April 14, 1966.

Dorothy Soderblom
DOROTHY SODERBLOM
CITY CLERK

THIS PLAT APPROVED THIS 30th DAY OF March 1966 BY THE CITY OF HAYS PLANNING COMMISSION.

(Signature)
CHAIRMAN



LOCATION MAP
Not to Scale

THIS IS A DIRECT PHOTOGRAPHIC REPRODUCTION OF THE OFFICIAL INSTRUMENT (RECORDED PLAT).
THIS REPRODUCTION WAS MADE BY BUCHER & WILLIS CONSULTING ENGINEERS, PLANNERS & ARCHITECTS IN NOVEMBER, 1979.

DESIGNED BY	JOHN W. SMITH
DRAWN BY	JB
CHECKED BY	
DATE	JOB NO.
Feb. 66	66-201
HAYS KANSAS	
HAYS PLAZA FIRST ADDITION	
SHEET 1 OF 1	
HAYS KANSAS	