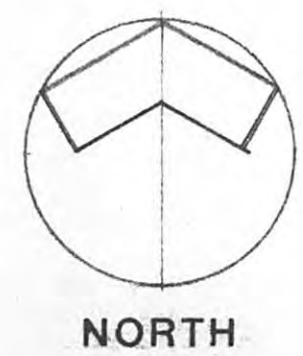
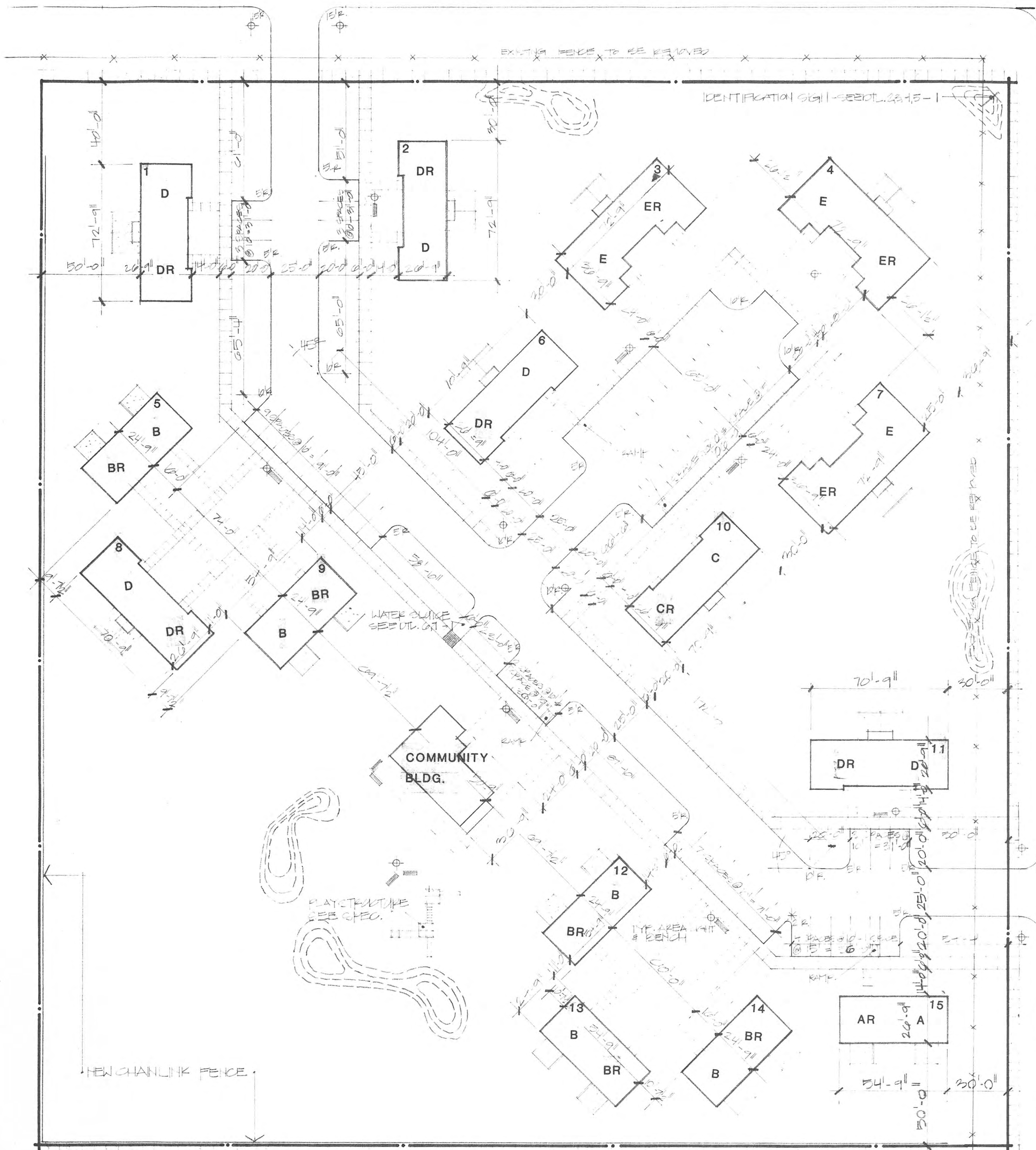


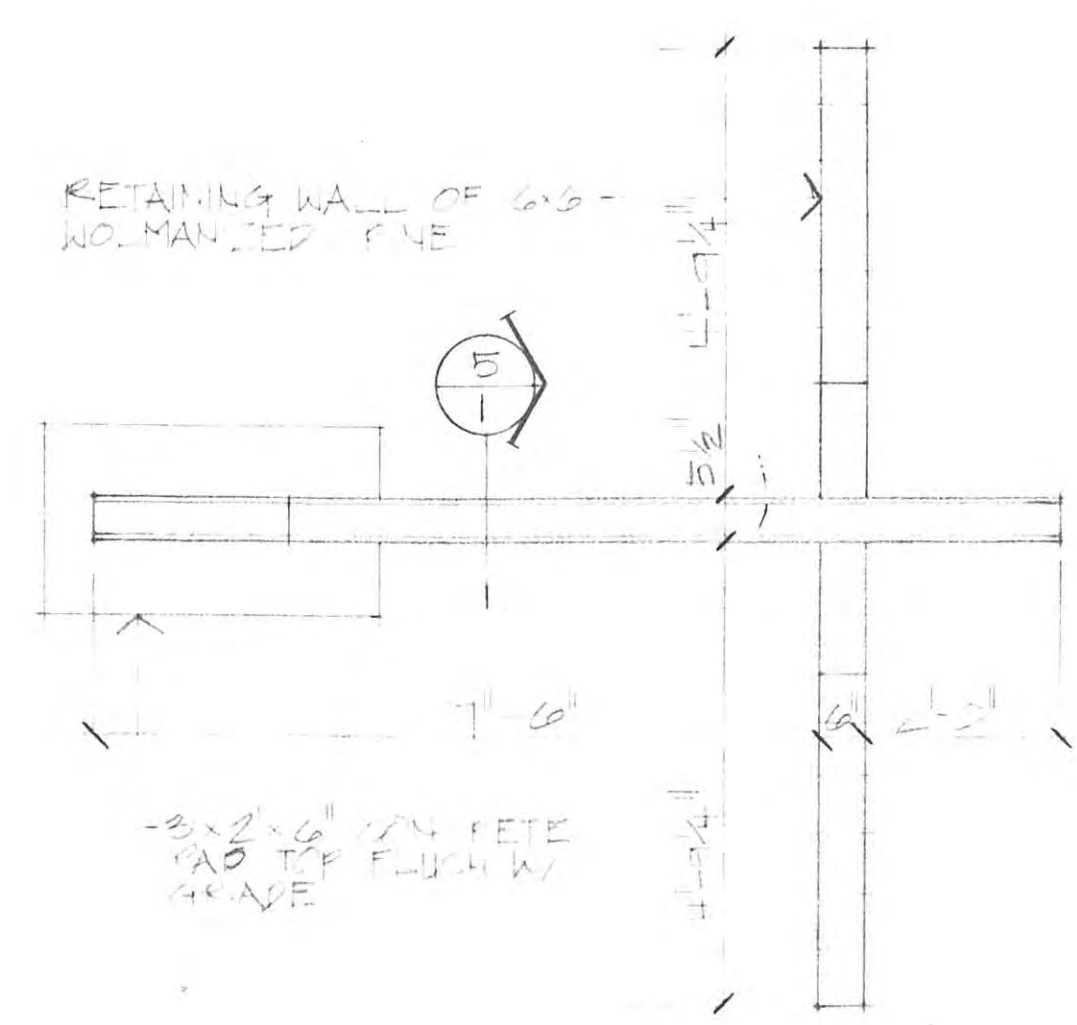
THIRTEENTH STREET



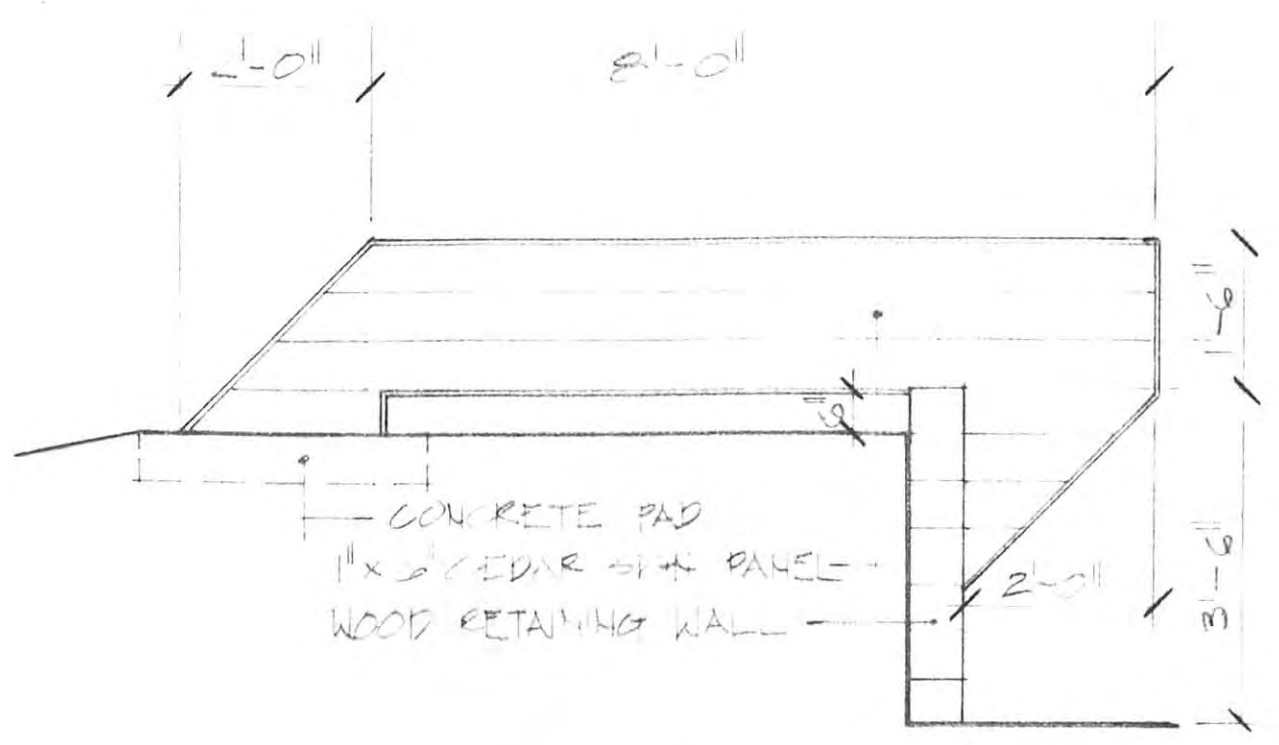
**1 SITE PLAN**  
SCALE: 1" = 30'-0"

- LEGEND**
- AREA LIGHT - SEE UTILITY
  - BENCH - SEE CHEDS
  - HANDICAPPED RAMP
  - EARTH BERM

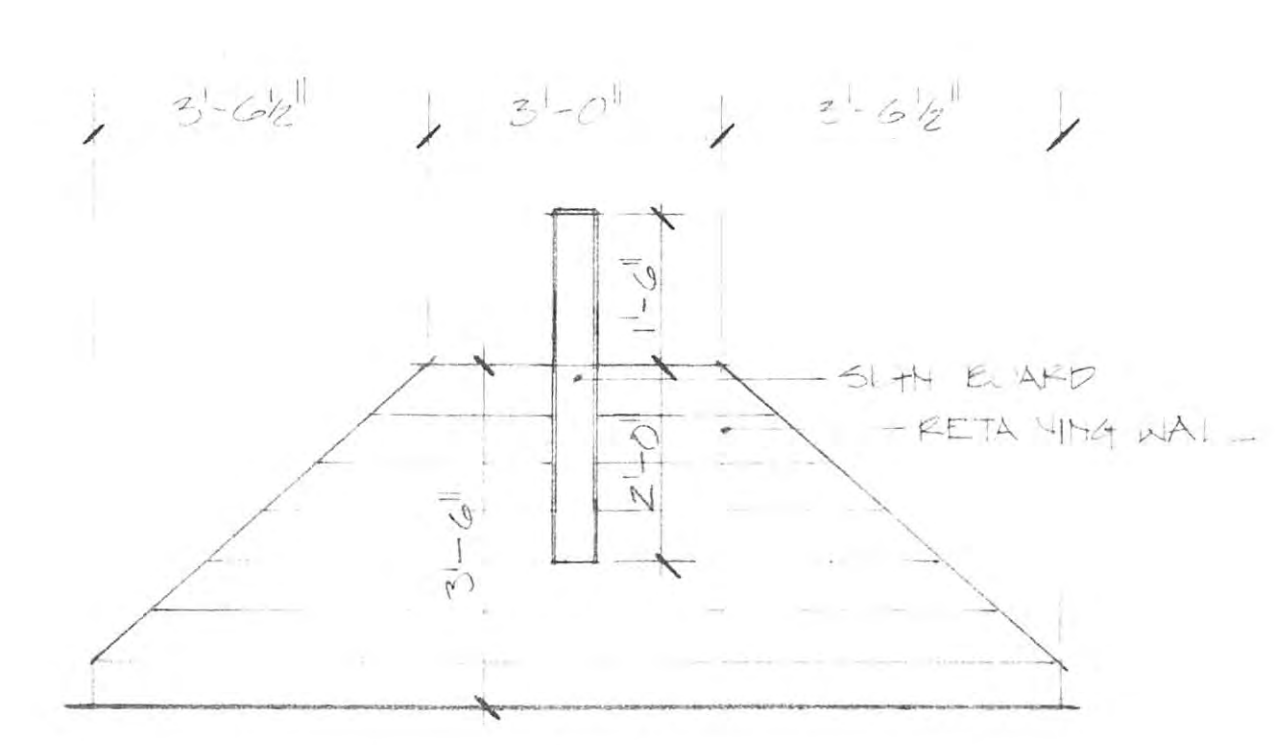
- NOTES**
1. ALL DIMENSIONS TO FACE UNLESS NOTED
  2. ALL STREET CURBS & UTILITY COORDINATION TO BE DONE PRIOR TO COMMENCEMENT OF THIS PROJECT.



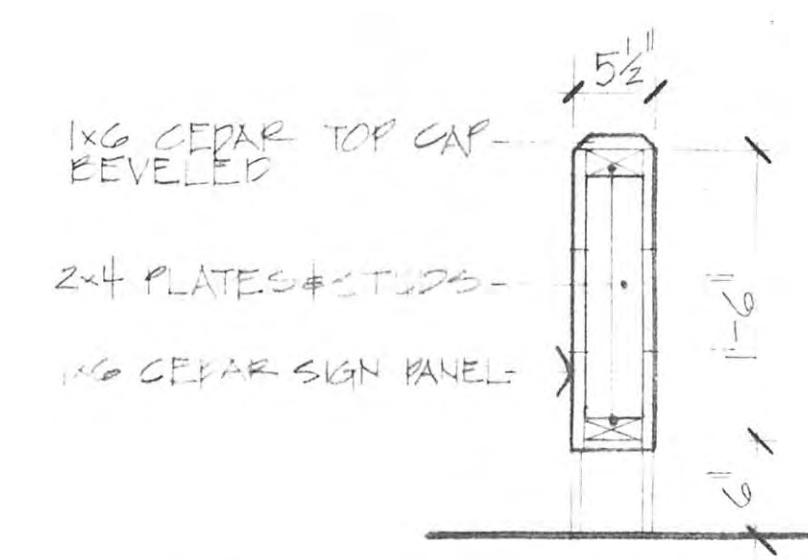
**2 IDENT. SIGN PLAN**  
SCALE 1/2" = 1'-0"



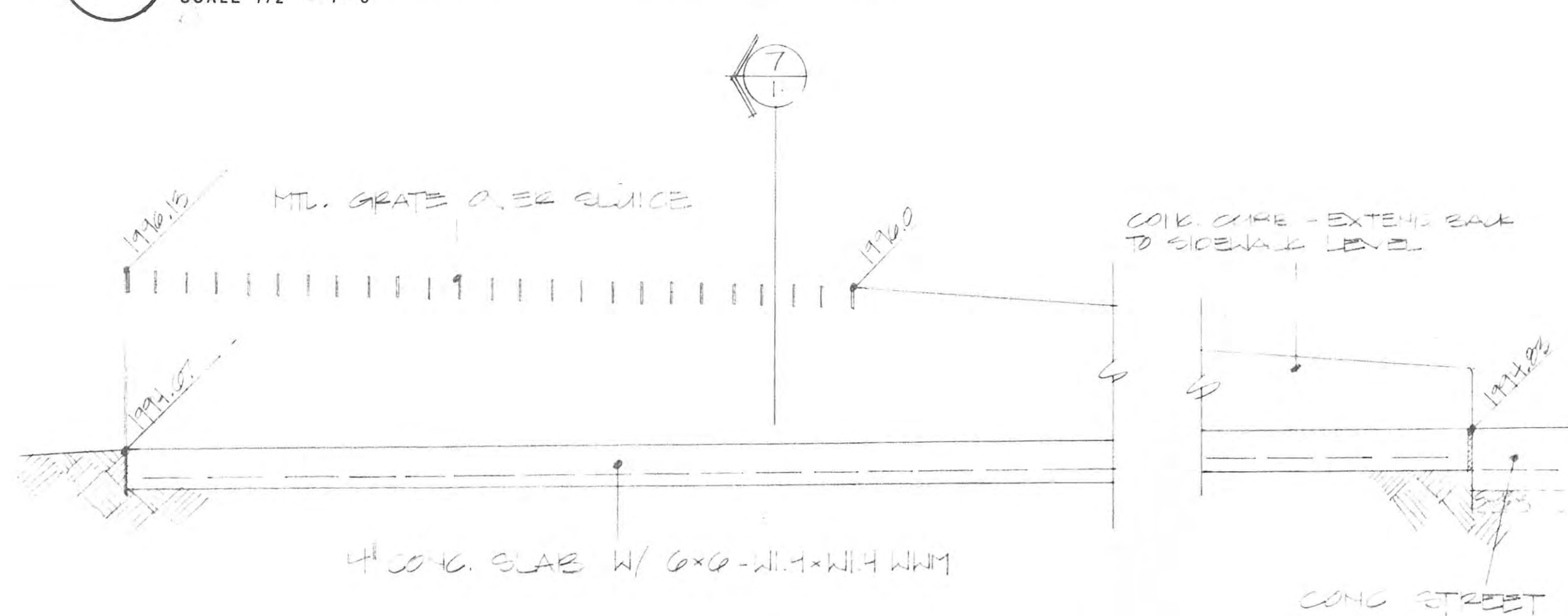
**3 IDENT. SIGN SIDE ELEVATION**  
SCALE 1/2" = 1'-0"



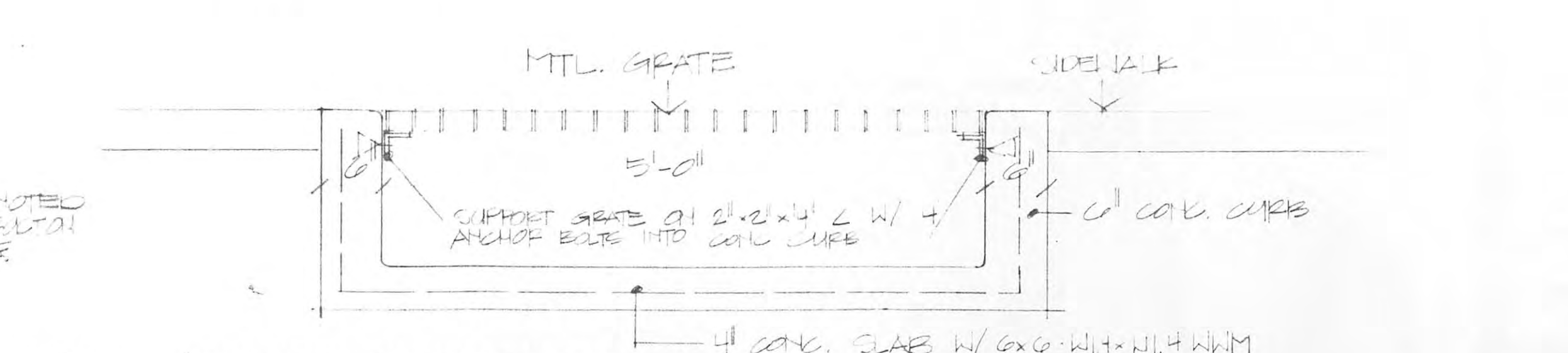
**4 IDENT. SIGN FRONT ELEVATION**  
SCALE 1/2" = 1'-0"



**5 IDENT. SIGN SECTION**  
SCALE 1" = 1'-0"



**6 WATER SLUICE DETAIL**  
SCALE 1" = 1'-0"



**7 WATER SLUICE SECTION**  
SCALE 1" = 1'-0"

**A THIRTY UNIT HOUSING PROJECT**  
FOR THE LOCAL HOUSING AUTHORITY OF HAYS, KANSAS

architectural services PLUS · 2141 centennial road · salina, kansas 67401 · 913 - 825 - 2727



date: 7.26.17  
drawn by: JAS/JFA  
checked by: KAY  
revisions:
