

REPLAT OF LOTS 3 THRU 12

BLOCK 2 OF SEVEN HILLS THIRD ADDITION

HAYS, KANSAS

LEGAL DESCRIPTION:

A tract of land in the South Half (S 1/2) of the Northwest Quarter (NW 1/4) of Section 28, Township 13 South, Range 18 West of the Sixth Principle Meridian in Ellis County, Kansas, more particularly described as follows:

Commencing at the Southwest corner of the Northwest Quarter (NW 1/4) of Section 28, Township 13 South, Range 18 West; THENCE on an assumed bearing of N 0°00'00" E, along the West line of said Northwest Quarter (NW 1/4), a distance of 664.37 feet; THENCE N 89°08'22" E, a distance of 50.00 feet to the point of beginning; THENCE continuing on the last described course, a distance of 878.00 feet; THENCE N 0°00'00" E, a distance of 135.87 feet; THENCE on a curve to the left having a radius of 640.00 feet, and arc distance of 135.60 feet; THENCE tangent to said curve, N 12°08'21" W, a distance of 9.54 feet; THENCE S 89°08'22" W, a distance of 861.68 feet; THENCE S 0°00'00" W, a distance of 280.02 feet to the point of beginning and also referred to as Block 2 of Seven Hills Third Addition to the City of Hays, Kansas. Said tract contains 5.626 acres, more or less.

EASEMENTS AND ALLEYS:

Easements are hereby dedicated for public use, as utility easement right-of-way, which are shown as lying between the dashed lines in widths indicated and as set forth on this plat, and said easements may be employed for the purpose of installing, repairing and maintaining gas lines, electric lines, telephone lines, and all other forms and types of public utilities, new or hereafter used, by the public over, under and along the strips marked "Utility Esm't." Alleys as shown are hereby dedicated for public use.

OWNER'S CERTIFICATE:

Know all men by these presents, that we the undersigned property owners of the land above described have caused the same to be surveyed and platted into lots, blocks, streets, alleys and easements, the same to be known as Replat of Lots 3 Thru 12 of Block 2 of Seven Hills Third Addition to the City of Hays, in Ellis County Kansas. The easements are hereby granted to the public for the purpose of constructing, operating, maintaining and repairing all public utilities.

B.E.S.T. INVESTMENT CORPORATION OF HAYS

By Elden Hammerschmidt
Elden Hammerschmidt
President and General Manager

NOTARY CERTIFICATE:

State of Kansas, County of Ellis, ss:

Be it remembered that on this 21st day of April, 1993, before me, a notary public in and for said County and State, came Elden Hammerschmidt, President and General Manager of B.E.S.T. Investment Corporation of Hays, to me personally known to be the same person who executed the foregoing instrument of writing and duly acknowledged the execution of same. In testimony whereof, I have hereunto set my hand and affixed my notarial seal the day and year above written.

Vickie Rollender
Notary Public

My Commission Expires: 2-22-97

APPROVALS:

This plat of Replat of Lots 3 Thru 12 of Block 2 of Seven Hills Third Addition has been submitted to and approved by the Hays Planning Commission this 19th day of April, 1993.

Larry Gould
CHAIRMAN
Darryl Meyer
SECRETARY

The dedications shown on this plan accepted by the City Commission of the City of Hays, Kansas, this 22nd day of April, 1993.

Eler Phelps
MAYOR

ATTEST: Carl Lee Gable, City Clerk

Entered on transfer record this 29th day of April, 1993.

Bryan J. M. Cullick
COUNTY CLERK

RECORDED:

State of Kansas, County of Ellis, ss:

This is to certify that this instrument was filed for record in the Register of Deeds Office on the 29 day of April, 1993, in Book Cab, Page 336.

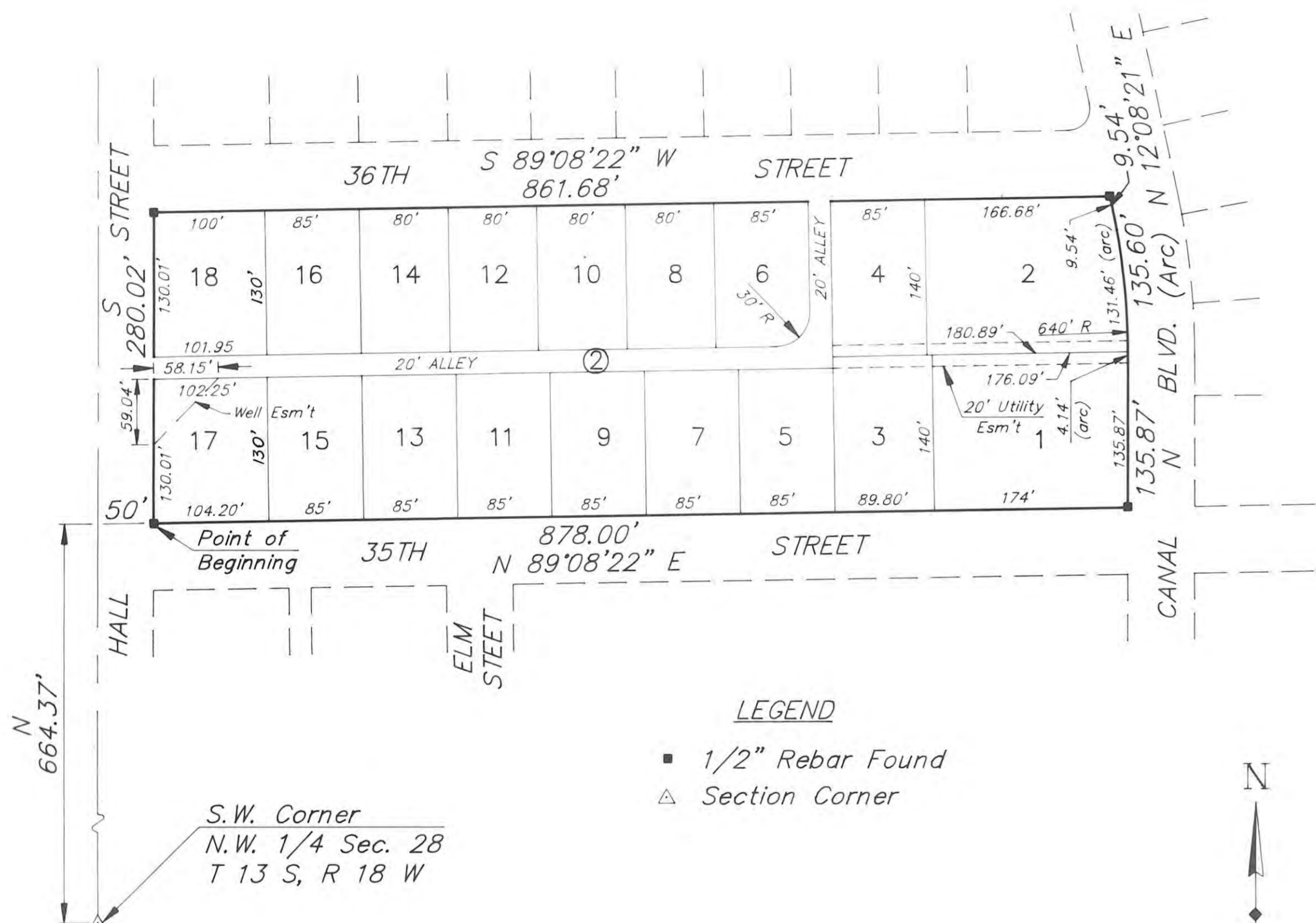
Rosemary Rupp
REGISTER OF DEEDS
Mary Ann King
DEPUTY



SURVEYOR'S CERTIFICATE:

I, Kelly S. Sunderland, a licensed professional engineer and registered land surveyor in the State of Kansas, do hereby certify this plat to be true and correct to the best of my knowledge and that all iron bars as shown have been accurately set. Survey completed in March 1979.

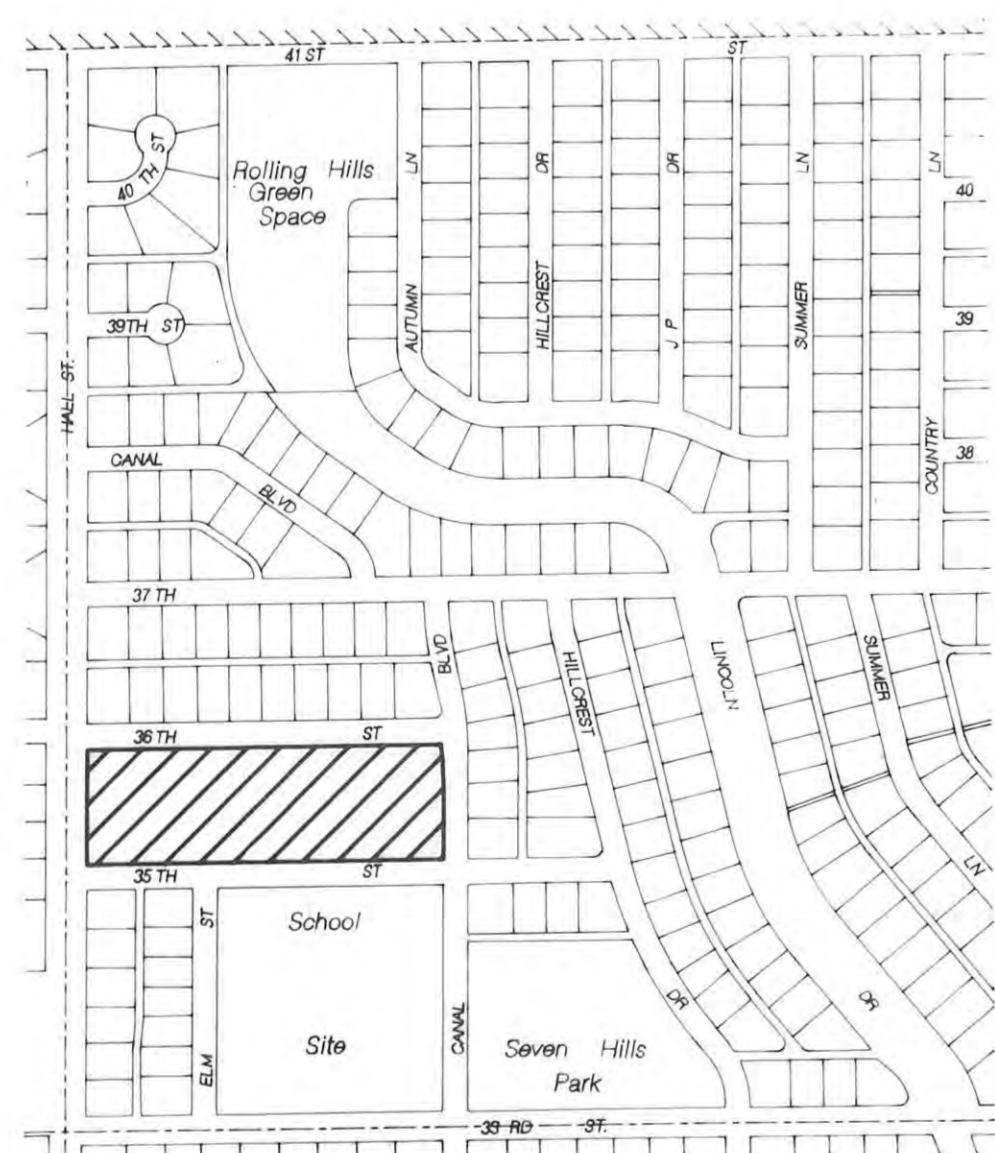
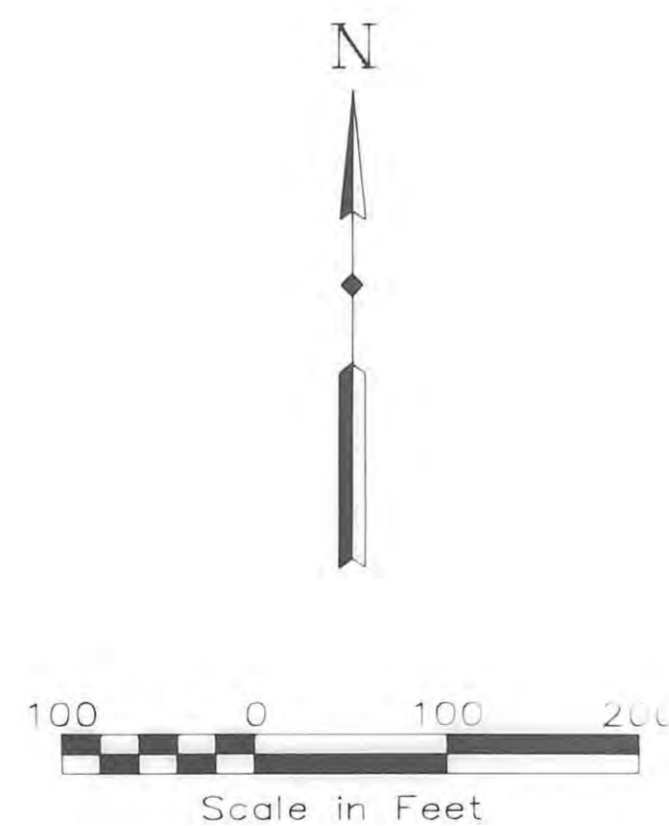
Kelly S. Sunderland
Kelly S. Sunderland



LEGEND

- 1/2" Rebar Found
- △ Section Corner

S.W. Corner
N.W. 1/4 Sec. 28
T 13 S, R 18 W



LOCATION MAP