

BOUNDARY SURVEY

for
WEBER CONDOS, LLC

STATE OF KANSAS } **MAY 16 2005**
 ELLIS COUNTY }
 This instrument was filed for record
 at 3:30 o'clock P M recorded in
 of Plats page 421
Webber Condos
 Fees 20.00 Registered of Deeds

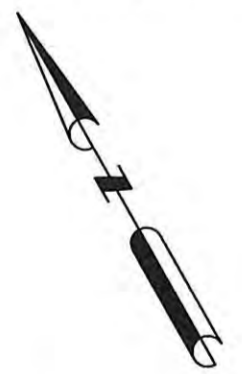


Square Footage	
Description	Sq. Ft.
Property	28987.2
Common Area	20883.2
Building #1	5242.0
Unit 1	441.7
Unit 2	433.8
Unit 4	607.8
Unit 5	440.8
Unit 6	269.3
Unit 7	283.5
Unit 8	271.4
Unit 9	283.1
Unit 10	271.5
Unit 11	444.0
Unit 12	613.5
Unit 14	441.6
Unit 15	440.0
Building #2	1301.3
Unit 16	260.9
Unit 17	256.1
Unit 18	255.7
Unit 19	258.5
Unit 20	270.1
Building #3	1560.7

LEGAL DESCRIPTION:
 Lots Twenty-three (23) through Thirty-six (36), inclusive, in Block Fifteen (15), J.E. WILSON'S ADDITION to the City of Hays, Ellis County, Kansas

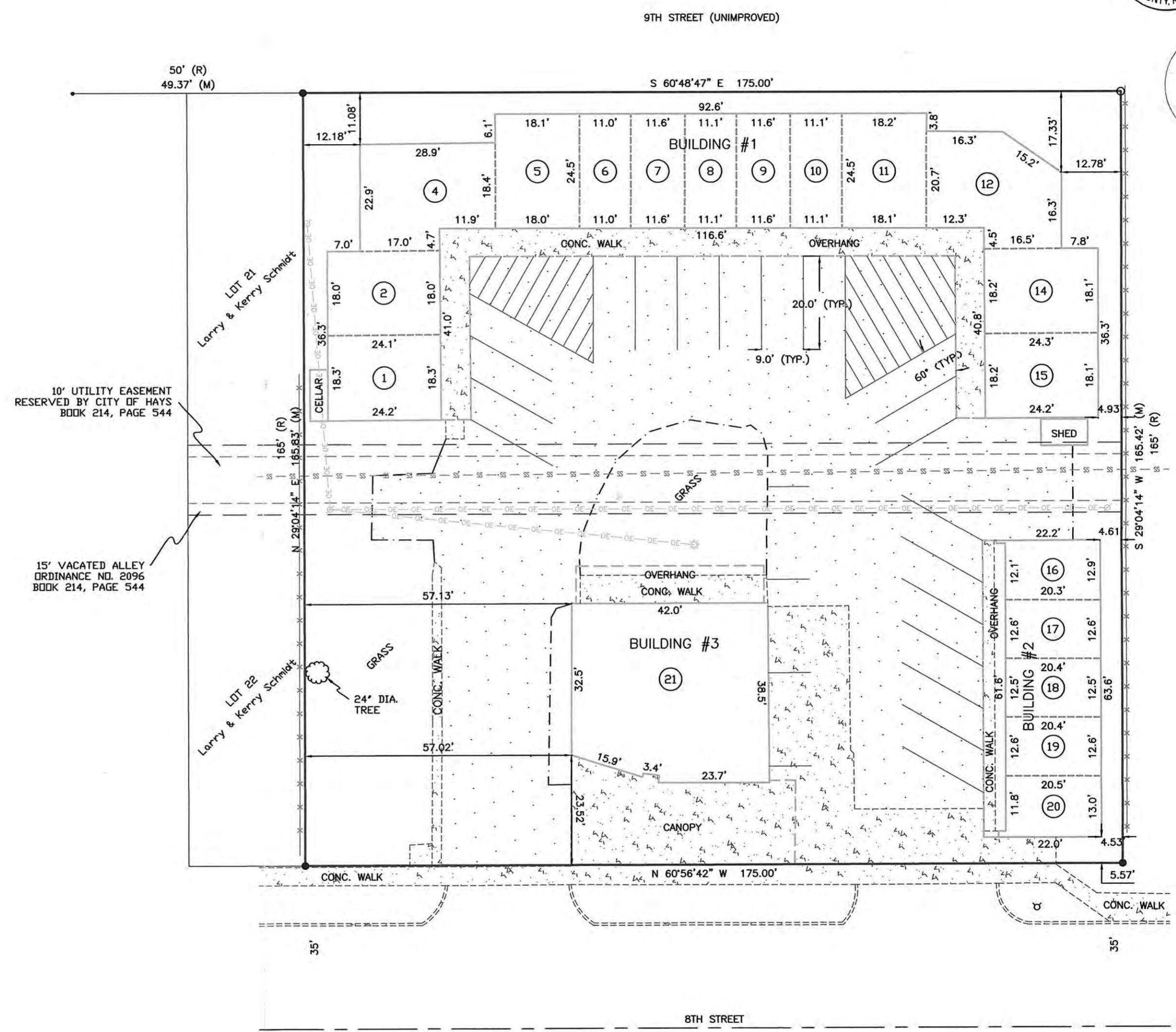
Including that portion of a vacated alley as described in City of Hays Ordinance No. 2096, recorded in Book 214, Page 544.

SURVEYOR'S CERTIFICATE:
 I, Darrell E. Christen, Registered Land Surveyor #1367 in the State of Kansas, certify that the survey shown on this plat was made by me or under my direct supervision on September 2nd, 2004. This plat is true and correct to the best of my knowledge and belief.



Darrell E. Christen
 Kansas Reg. No. 1367

- LEGEND:**
- Found 1/2" rebar w/cap *LS 715"
 - Found 3/4" iron bar w/ribbon
 - Set 1/2" rebar w/cap *CHRISTEN LS 1367"
 - ⊗ Power Pole
 - ⊙ Light Pole
 - ⊕ Fire Hydrant
 - R Recorded Distance
 - M Measured Distance
 - - - - Sanitary Sewer
 - - - - Overhead Electric
 - - - - Fence
 - [Hatched Box] Asphalt
 - [Dotted Box] Concrete



Jim Weber
 527 E. 8th Street
 Hays, KS 67601

ADVANCED LAND SURVEYING & DRAFTING
 PO Box 27 Hays, KS 67601 Office: (785) 650-0139 Fax: (785) 650-0189

SHEET: 1 of 1 PROJECT #: 04-407
 DRAWN BY: KMT SCALE: 1" = 20'
 APPROVED BY: DEC DATE: 09/02/04