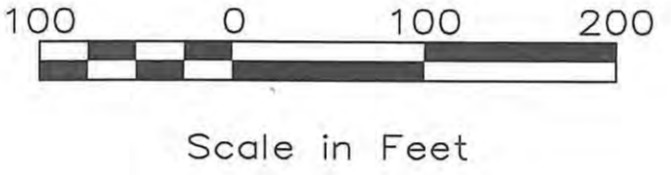
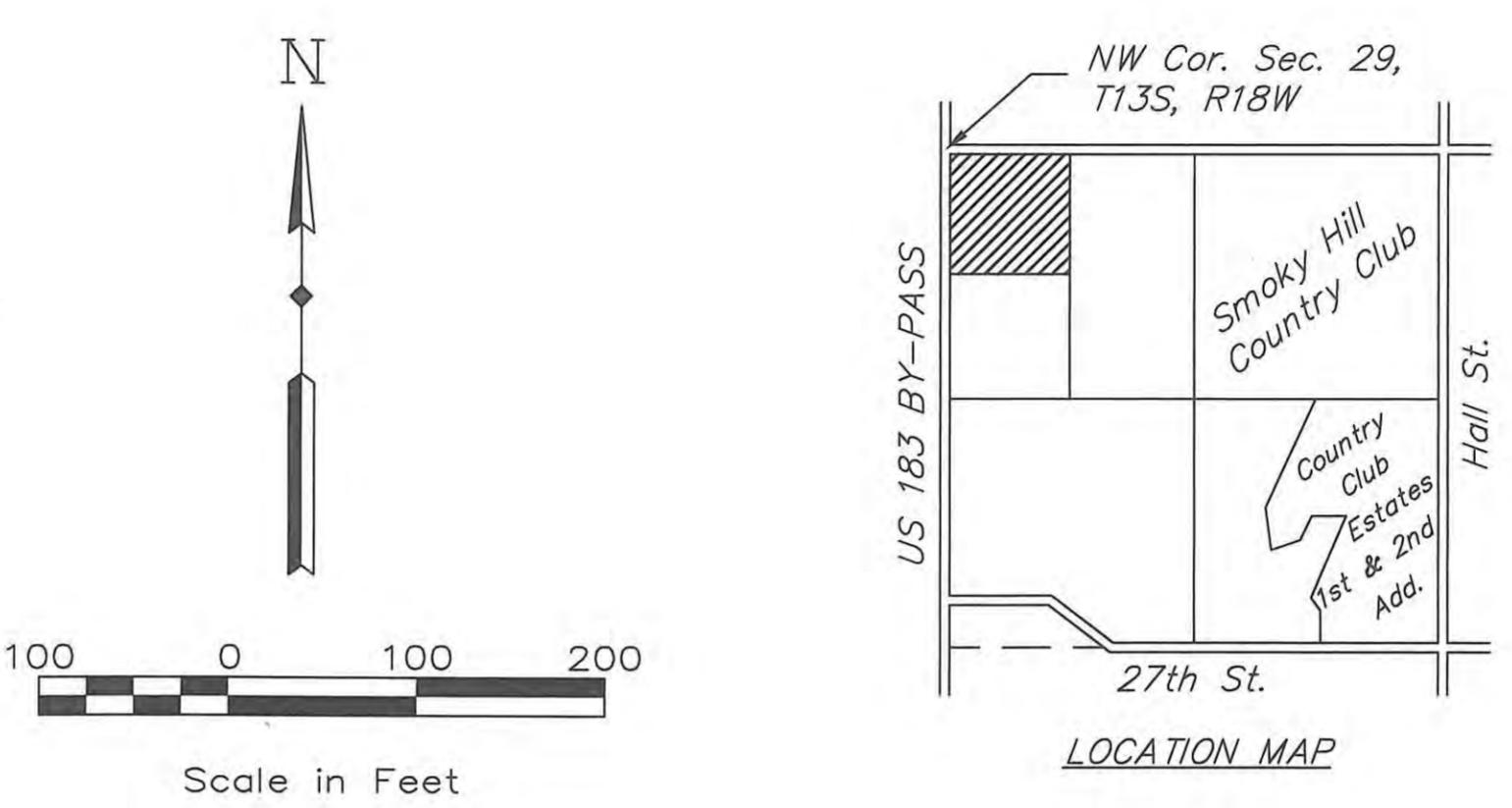
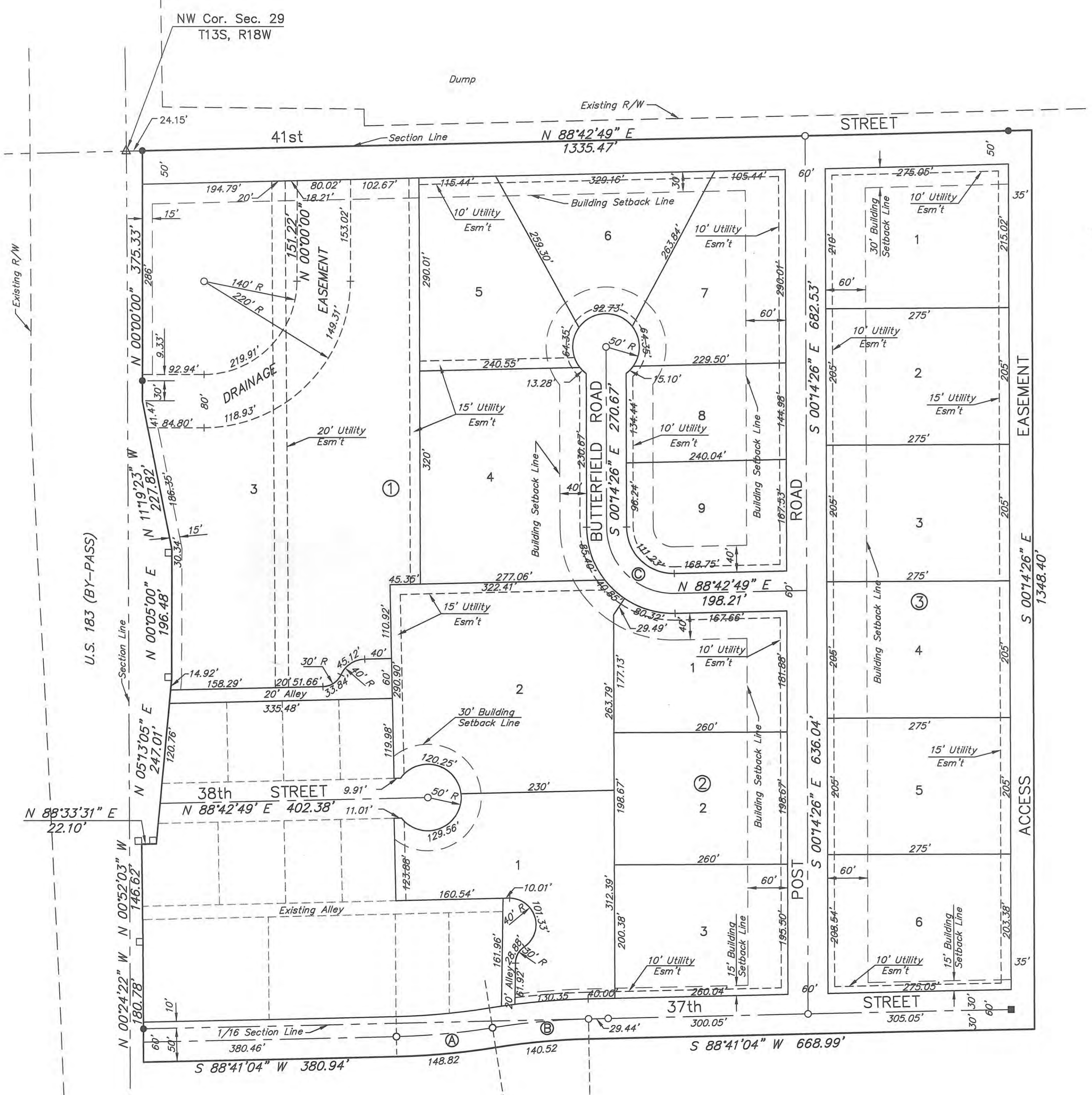


SECOND REPLAT OF A PORTION OF WESTRIDGE ADDITION

ELLIS COUNTY, KANSAS

ORDINANCE NO. 2829
 AN ORDINANCE VACATING A PORTION OF A PUBLIC UTILITY EASEMENT LOCATED ON LOT TWO (2), BLOCK ONE (1), SECOND REPLAT OF A PORTION OF WESTRIDGE ADDITION, TO THE CITY OF HAYS, KANSAS.
 WHEREAS, the Governing Body of the City of Hays, Kansas, finds it necessary and expedient that a portion of the utility easement located on Lot Two (2), Block One (1), SECOND REPLAT OF A PORTION OF WESTRIDGE ADDITION to the City of Hays, Kansas, described as follows, to-wit:
 The North Fifteen (15) feet of Lot Two (2), Block One (1), except the West Forty-five and Thirty-five hundredths (45.35) feet of the North Fifteen (15) feet of said lot, SECOND REPLAT OF A PORTION OF WESTRIDGE ADDITION to the City of Hays, Ellis County, Kansas;
 be vacated;
 WHEREAS, K.S.A. 12-504, authorizes the vacation of lands by the City Governing Body under certain conditions, which have now been met;
 NOW, THEREFORE, BE IT ORDAINED BY THE GOVERNING BODY OF THE CITY OF HAYS, KANSAS:
 Section 1. That a portion of the utility easement located on Lot Two (2), Block One (1), SECOND REPLAT OF A PORTION OF WESTRIDGE ADDITION to the City of Hays, Kansas, described as follows, to-wit:
 The North Fifteen (15) feet of Lot Two (2), Block One (1), except the West Forty-five and Thirty-five hundredths (45.35) feet of the North Fifteen (15) feet of said lot, SECOND REPLAT OF A PORTION OF WESTRIDGE ADDITION to the City of Hays, Ellis County, Kansas;
 be and the same is hereby vacated.
 Section 2. This ordinance shall be effective upon publication in the Hays Daily News, the official city newspaper.
 PASSED AND ADOPTED this 27th day of August, 1998.
 BOOK 455 PAGE 249



LEGAL DESCRIPTION:

Block One (1), Block Two (2), and Block Three (3) all in the Replat of a Portion of Westridge Addition to Ellis County, Kansas, located on a part of the Northwest Quarter (NW 1/4) of Section Twenty-nine (29), in Township Thirteen (13) South, Range Eighteen (18) West of the Sixth (6th) Principal Meridian, Ellis County, Kansas.

STREETS & EASEMENTS:

Streets, roads, and alleys as shown on this plat and not heretofore dedicated to and for public use are hereby dedicated. Easements are hereby dedicated for public use, as utility easement right-of-way, which are shown as lying between the dashed lines in widths indicated and as set forth on this plat, and said easements may be employed for the purpose of installing, repairing and maintaining gas lines, electric lines, telephone lines, and all other forms and types of public utilities, now or hereafter used, by the public over, under and along the strips marked "Utility Esm't."

OWNER'S CERTIFICATE:

Know all men by these presents, that we, the undersigned property owners of the land above described have caused the same to be surveyed and platted into Lots, Blocks, Streets, Roads, Alleys and Easements, the same to be known as "Second Replat of a Portion of Westridge Addition," in Ellis County, Kansas. The Streets, Roads, and Alleys are hereby dedicated to and for the use of public, and easements as indicated on the accompanying plat are hereby granted to the public for the purpose of constructing, operating, maintaining, and repairing all public utilities.

CURVE DATA				
CURVE	Δ	R	T	Lc
(A)	7°56'00"	1044.83	72.45	144.66
(B)	7°56'00"	1044.83	72.45	144.66
(C)	91°02'45"	100.00	101.84	158.90

APPROVALS:

This second replat of a portion of Westridge Addition has been submitted to and approved by the Hays Planning Commission this 24th day of February, 1997.

Larry Gould
CHAIRMAN
Dave Balda
SECRETARY

Richard C. Chambers
Richard C. Chambers
Christie J. Chambers
Christie J. Chambers

The dedications shown on this plat accepted by the City Commission of the City of Hays, Kansas, this 24 day of Apr., 1997.

Jaime Clark
MAYOR
Carol Ann Disher
City Clerk



ATTEST: John T. Bird
John T. Bird, Attorney for the City of Hays

The dedications shown on this plat accepted by the County Commission of Ellis County, Kansas, this 10th day of March, 1997.

Pete D. Johnson
CHAIRMAN

Elinda Bauer
Notary Public

My Commission Expires: 1-8-2000

ATTEST: Alberta Klaus
County Clerk

RECORDED:

State of Kansas, County of Ellis, ss:
 This is to certify that this instrument was filed for record in the Register of Deeds Office on the 14 day of May, 1997, in Book Clk., Page 352.



Rene Ann Ruff
REGISTER OF DEEDS
DEPUTY
Notary 426-598
Resid 426-599
Appt 426-600
Subst 426-603

SURVEYOR'S CERTIFICATE:

I, Harvey Ruder, a licensed Professional Engineer and Registered Land Surveyor in the State of Kansas, do hereby certify this plat to be true and correct to the best of my knowledge.

Harvey Ruder
Harvey Ruder

2-20-97
Date



- LEGEND
- 1/2" Bar Found
 - 1/2" Bar Set
 - State Highway R/W Monuments